



*belini*

# LIFE Platform meeting FOCUS ON WATER RESILIENCE STRATEGY

LIFE Strategic Integrated Projects implementing River Basin  
Management Plans practices

## PLENARY presentations

Ingrid Hägermark  
Jenny Herbertsson  
Elin Ångman



14-15 October 2025

Brussels

This meeting is  
organised by



# Project title: LIFE IP Rich Waters

**RBMP targeted: Northern Baltic Sea District**

**Beneficiaries: 35 partners**

**Total Budget: € 30 030 380**

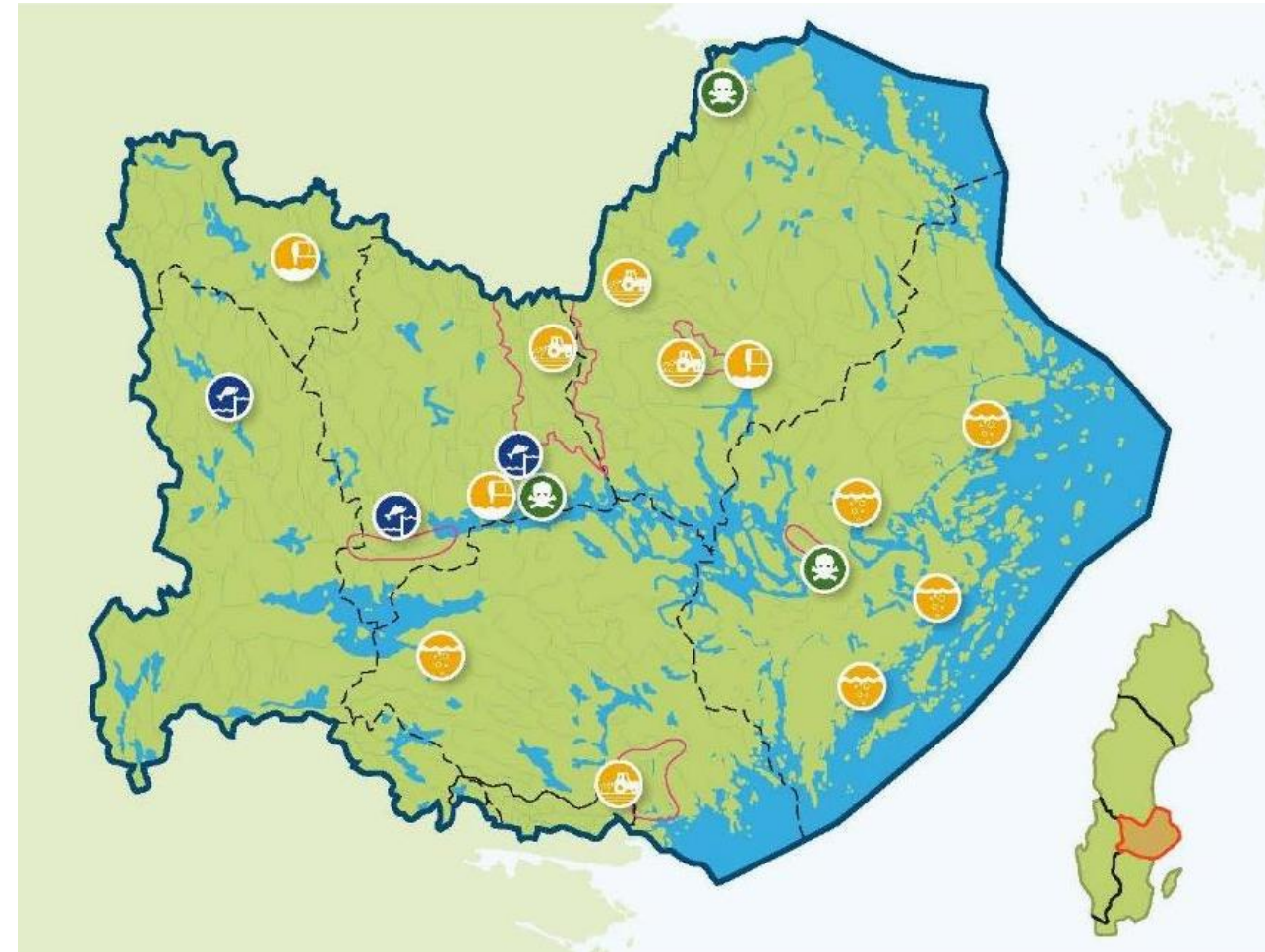
**Start and end dates:**

**01/01/2017 - 30/06/2025**

**Presented by:**

**Jenny Herbertsson,  
The municipality of Katrineholm**

**Elin Ångman & Ingrid Hägermark,  
Lake Mälaren Water Conservation Association**



Swedish Agency  
for Marine and  
Water Management



# The first LIFE IP project in Sweden

Total budget: 30 Million EURO

- \* 10 Million from EU
- \* 5 Million from Swedish Agency for Marine and Water Management
- \* 15 Million from the participants

Actions  
for better  
water!



Swedish Agency  
for Marine and  
Water Management

# THE GOAL: Good water status in Northern Baltic Sea District



**1. MOBILIZE CAPACITY AND RESOURCES**

**2. INCREASE THE JOINT KNOWLEDGE**

**3. INSPIRE WITH LEARNING EXAMPLES**

**4. REDUCE THE LOAD OF NUTRIENTS, POLLUTANTS AND BARRIERS**

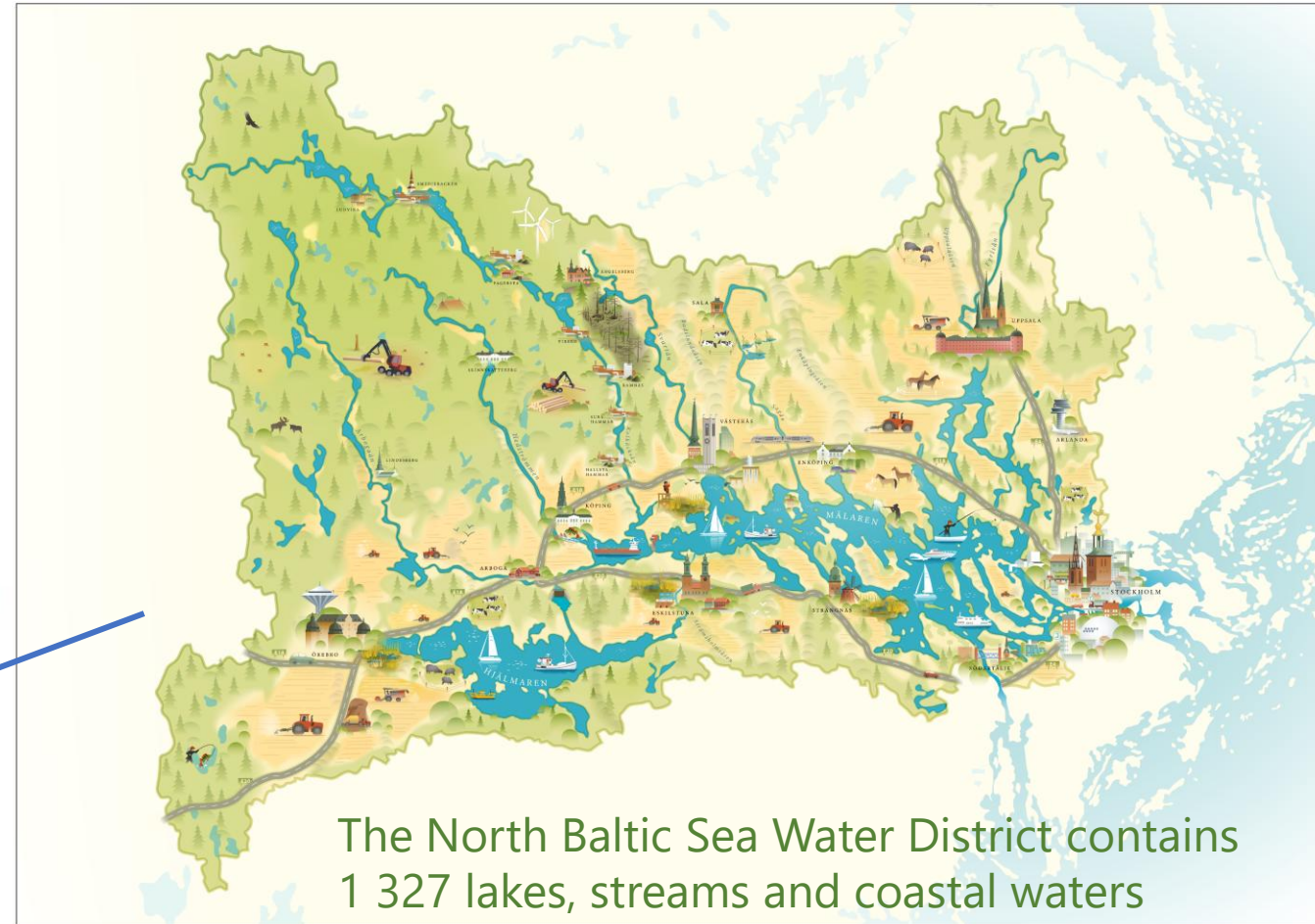
**5. TEST NEW TECHNOLOGY AND INNOVATIVE SOLUTIONS**



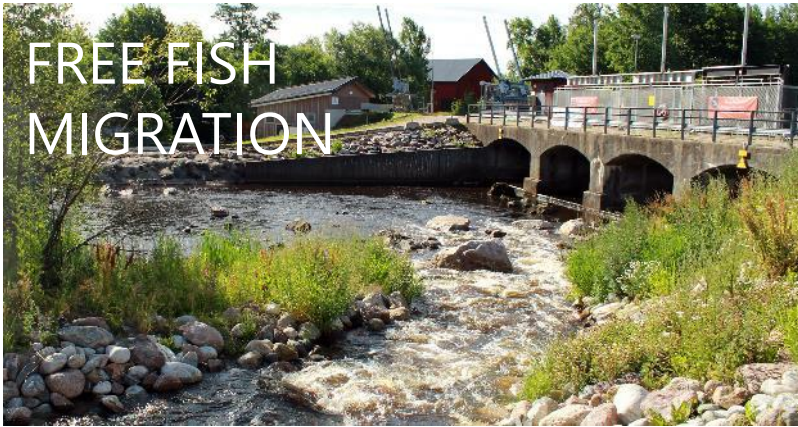
Havs  
och Vatten  
myndigheten



# Five Water Authorities decides on environmental quality standards







FREE FISH  
MIGRATION



ENVIRONMENTAL  
POLLUTANTS



WATER  
PLANNING



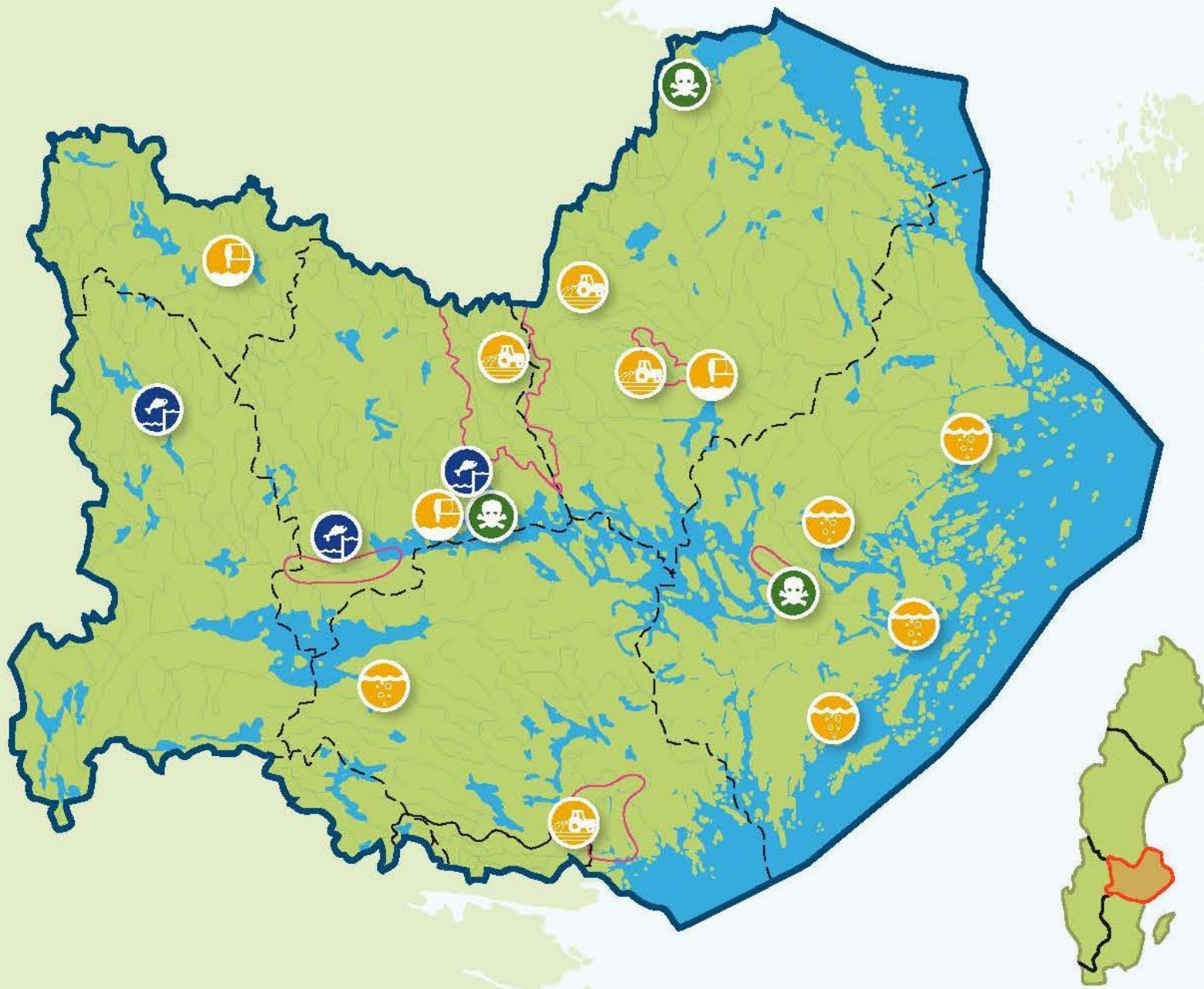
EUTROPHICATION  
INTERNAL



EUTROPHICATION EXTERNAL

# ADDRESSING ALL THE MAJOR ENVIRONMENTAL PROBLEMS





Free fish migration



Environmental pollutants



Eutrophication – internal loading



Eutrophication – agriculture



Eutrophication – waste and storm water



Water planning



Swedish Agency  
for Marine and  
Water Management



FREE FISH  
MIGRATION



CLIMATE CHANGE  
AND STORMWATER



EUTROPHICATION  
EXTERNAL



ENVIRONMENTAL  
POLLUTANTS



MUNICIPAL WATER  
PLANNING



EUTROPHICATION  
INTERNAL



RESULTS



# Different types of results



- Direct environmental effects
- Concrete measures – good examples
- Contribution to water administration
- Decision making tools
- Methodology development
- New solutions and new technology
- Project development
- Networks and new forms for cooperation
- Visibility and public debate
- Social and economic effects





# MULTIFUNCTIONAL WATER PARK JOHANNISBERG

- \* 9 400 m<sup>2</sup> of water surface at Johannisbergs Wetland Park
- \* Reduce nutrients, heavy metals, PFAS and other pollutants
- \* Recreation & biodiversity



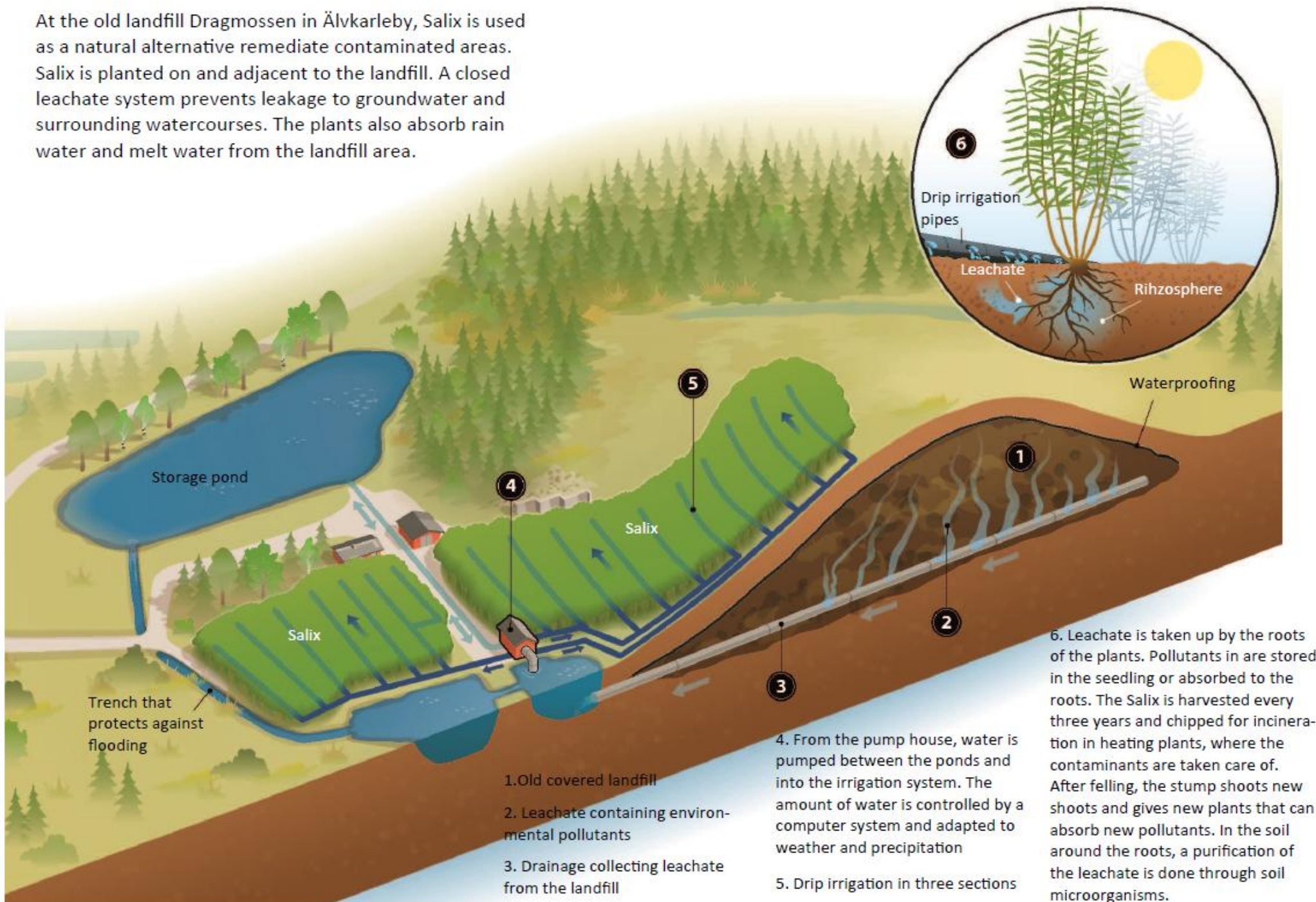
# Fast-growing willow to clean up an old landfill

- \* Old landfill located in Älvkarleby.
- \* Use water from landfill to irrigate willow trees that are harvested and burnt.
- \* Positive effect on removal of heavy metals and toxic substances- including PFAS.





At the old landfill Dragmossen in Älvkarleby, Salix is used as a natural alternative to remediate contaminated areas. Salix is planted on and adjacent to the landfill. A closed leachate system prevents leakage to groundwater and surrounding watercourses. The plants also absorb rain water and melt water from the landfill area.



**25 000** cuttings have been planted.

**170** cubic metres of willow have been harvested on two occasions.

**8** different heavy metals and several PFAS substances are being absorbed by the willows.



# Example: Source tracking PFAS

- Source tracking in the municipality of Katrineholms kommun.
- PFAS was found in all samples
- Thematic meetings for after life/ complementary actions on environmental pollutants
- Result: Baltic PFASResolve (Interreg Central Baltic) 2025-2028 Pilot areas/wetlands for phytoremediation of PFAS in Sverige (Katrineholm), Estland and Finland



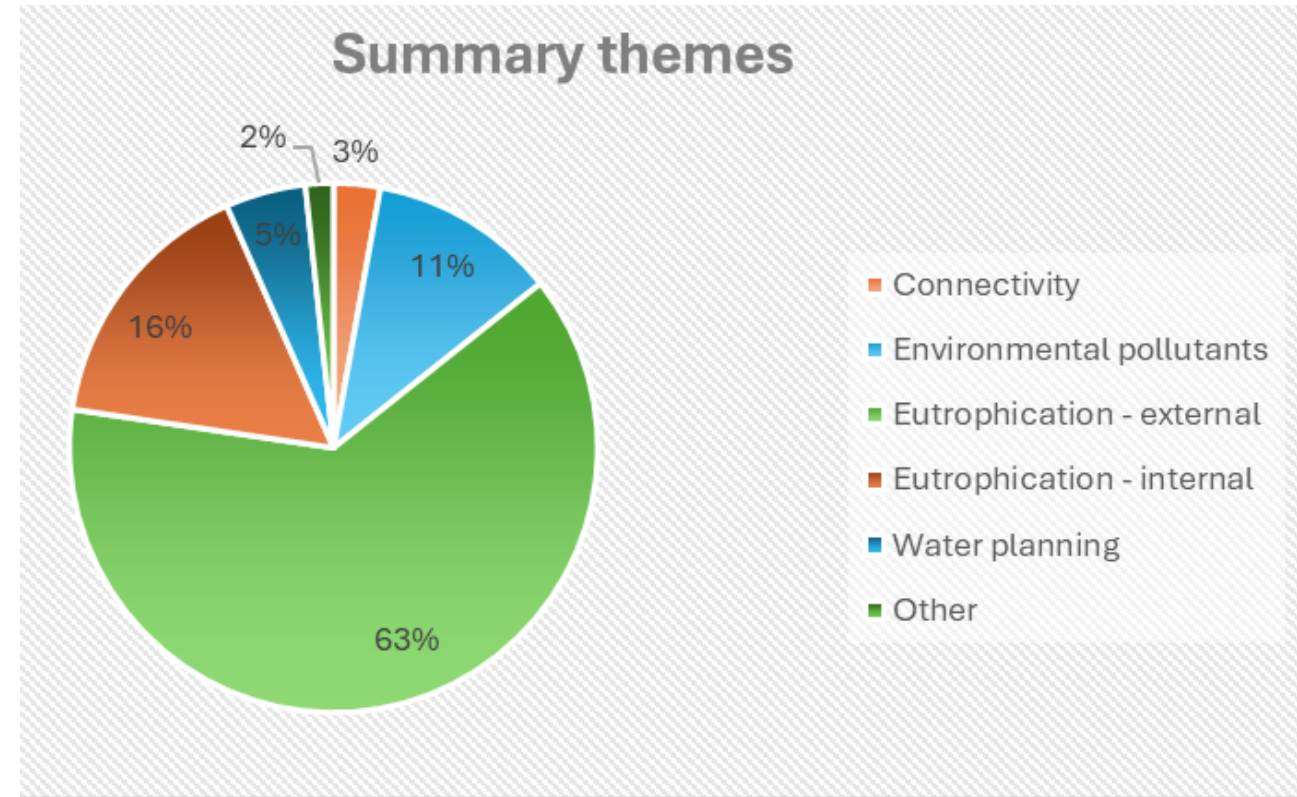
# Complementary Actions (CA) in numbers

\* Total amount committed and/or spent by Final Report **121 961 139 EUR**.

\* In total about **219 projects**.

\* **31 of 34** beneficiaries are partners in projects reported as CAs.

\* **68 out of 74** municipalities in the water district have participated in activities related to project development.



Based on total amount (EUR) mobilised.





# TOGETHER, WE MAKE A DIFFERENCE!

\* Cooperation

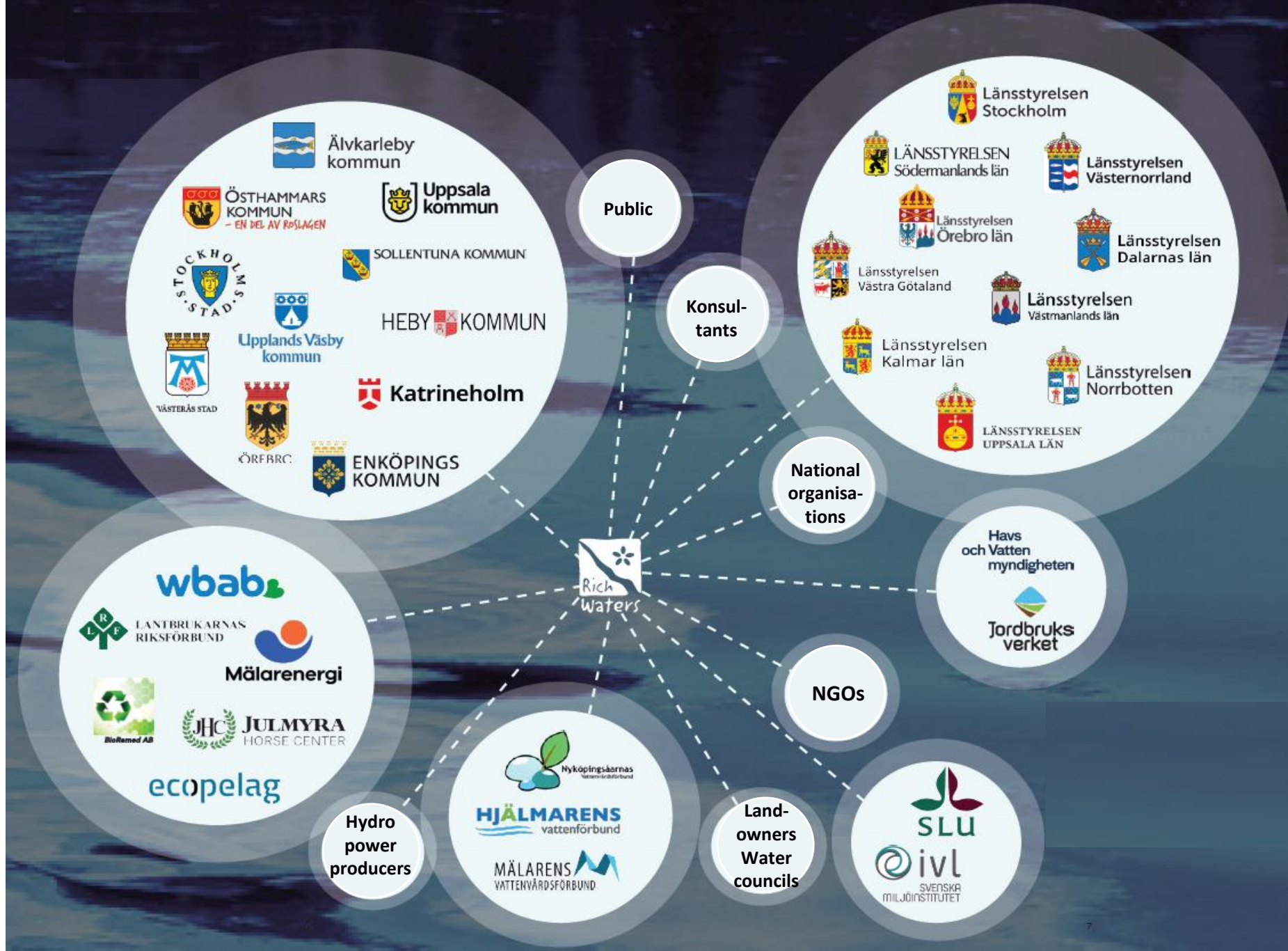
\* Width

\* Time

\* Flexibility



# INVOLVING ACTORS AT VARIOS LEVELS AND WITH DIFFERENT ROLES







# CONCLUSIONS

- \* Invest in catchment officers and local collaboration!
- \* Let things take time! Long-term funding that will extend beyond terms of office is required.
- \* Look at what others have done and how they have solved their various challenges; their examples can provide real inspiration. Also be generous in sharing your own experiences.
- \* Demonstrate the societal and socio-economic benefits of water improvement efforts.





# WORK AHEAD

## Partnerships wanted!

- \* Adaption to climate change
- \* PFAS: remediation and policy change
- \* Eutrophication
- \* Funding



# More information:

Read more in our Layman's report on our website:

[richwaters.se/wp-content/uploads/Actions-for-better-waters-Layman's-Report.pdf](http://richwaters.se/wp-content/uploads/Actions-for-better-waters-Layman's-Report.pdf)

Thank you!

Elin Ångman, [elin.angman@lansstyrelsen.se](mailto:elin.angman@lansstyrelsen.se)

Ingrid Hägermark,  
[ingrid.hagermark@lansstyrelsen.se](mailto:ingrid.hagermark@lansstyrelsen.se)

Jenny Herbertsson,  
[jenny.herbertsson@katrineholm.se](mailto:jenny.herbertsson@katrineholm.se)

[www.richwaters.se](http://www.richwaters.se)