



belini

LIFE Platform meeting FOCUS ON WATER RESILIENCE STRATEGY

LIFE Strategic Integrated Projects implementing River
Basin Management Plans practices

Day 2.

Workshop FINANCES Complementary funding strategies, water pricing,
finances and investments

Renaud Bocquet
Els Abts
Flemish Land Agency
Partner of Life Belini



14-15 October 2025

Brussels

This meeting is
organised by



Project title: LIFE Belini



RBMP targeted: 2nd RBMP of the Scheldt (2016-2021), incl. the FRMP, for the three regions involved (Flanders, Brussels & the Walloon Region)

Beneficiary/ies: 8 partners

(VMM, LB-BE, SPW, VBR, VLM,
Vivaqua, DVW, De Watergroep)

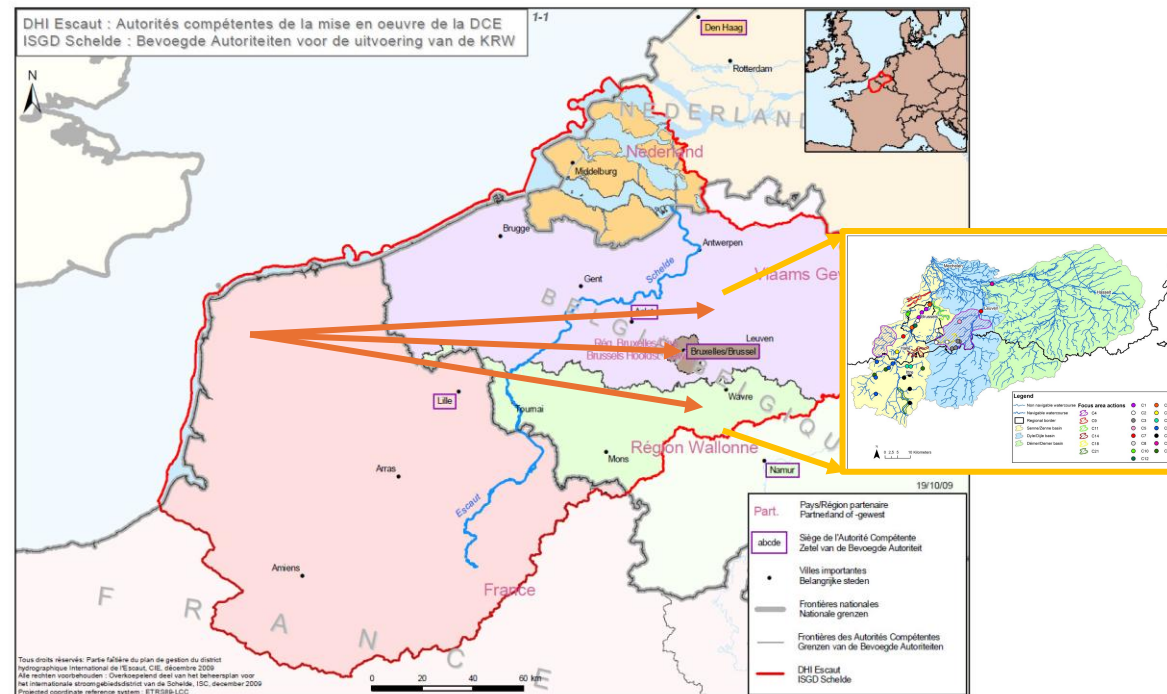
Total Budget: € 18.111.366

Start and end dates:
2016-2026

Presented by:
Els Abts & Renaud Bocquet

Beneficiary

SPOC VLM: Leen Sammels
(leen.sammels@vlm.be)



Project title: LIFE Belini



RBMP targeted: 2nd RBMP of the Scheldt (2016-2021), incl. the FRMP, for the three regions involved (Flanders, Brussels & the Walloon Region)

Beneficiary/ies: 8 partners

(VMM, LB-BE, SPW, VBR, VLM,
Vivaqua, DVW, De Watergroep)

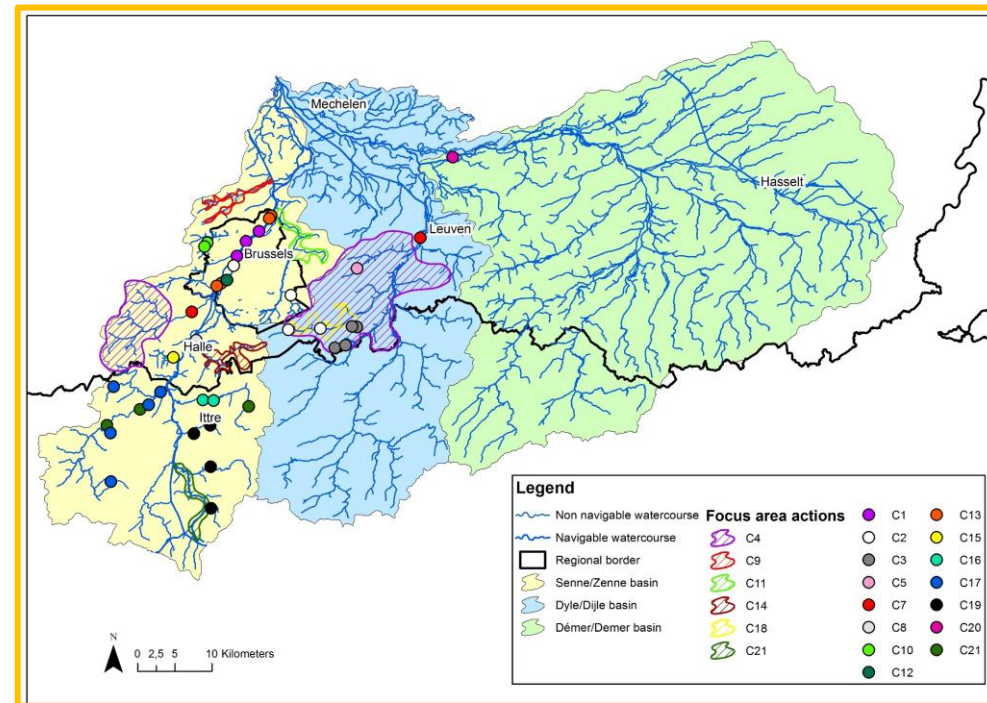
Total Budget: € 18.111.366

Start and end dates:
2016-2026

Presented by:
Els Abts & Renaud Bocquet

Beneficiary

SPOC VLM: Leen Sammels
(leen.sammels@vlm.be)

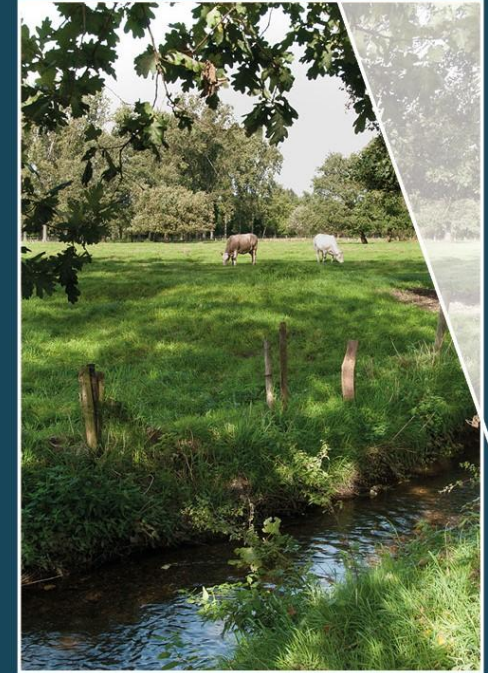


Complementary funding strategies in the Flemish metropolitan area around Brussels

“Strengthening the open space together”

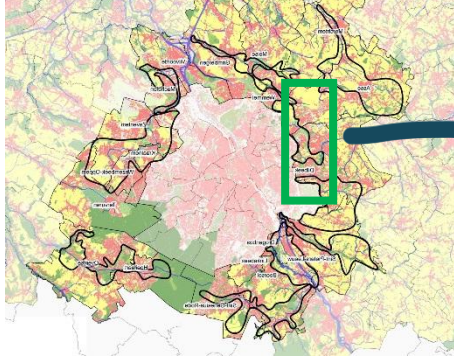


Vlaanderen
is open ruimte



VLAAMSE
LAND
MAATSCHAPPIJ

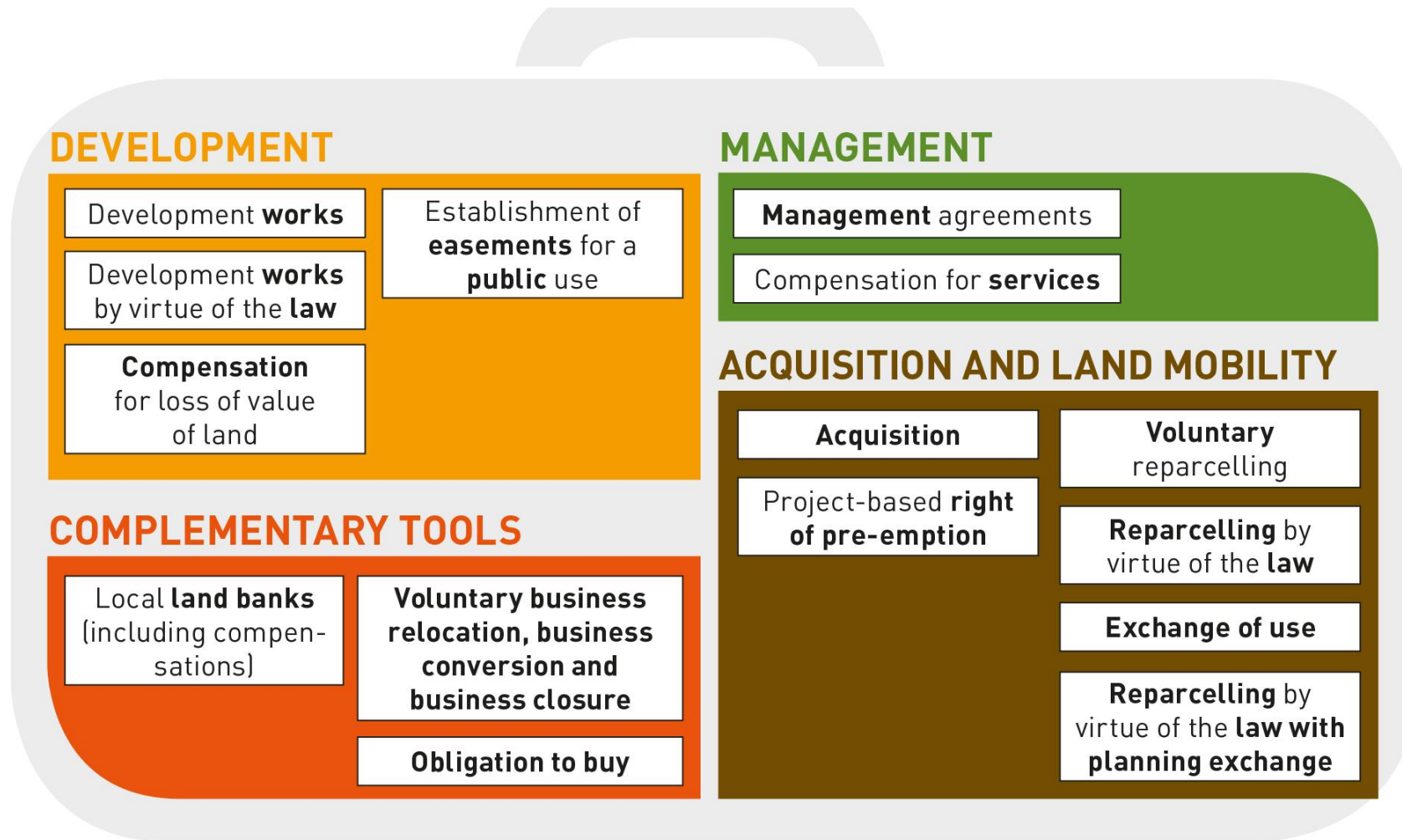
Presentation of the Flemish Land Agency



from regional vision to development plan



and a box of tools for implementation





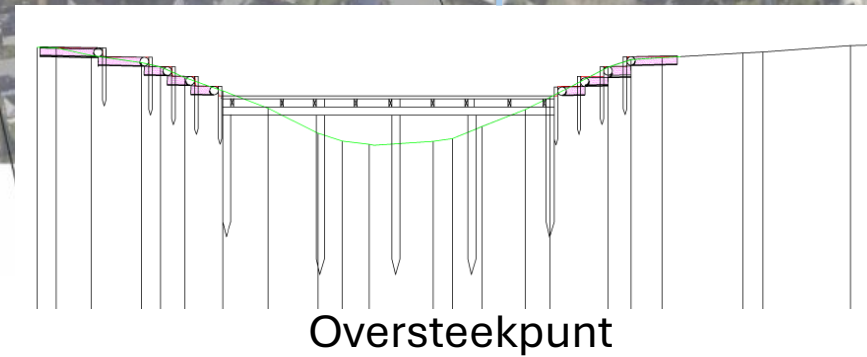
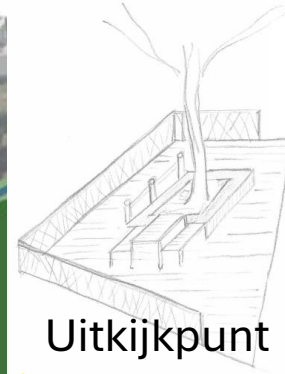
- Toegang
- Ontmoetingspunt
- Plaatsen brug
- Uitkijkpunt
- Onverhard wandelpad
- Rietkraag
- Beverbescherming
- Vishelling
- Verbossen
- Moerasontginning
- Houtkant aanplanten

Dijken en oeversbeschoeiing weghalen tussen vijvers en laten verlanden van vijvers

Bomen kappen rondom vijver om bladval te verminderen + slibruiming + verwijderen oeversbeschoeiing + aanleg ecologische oevers

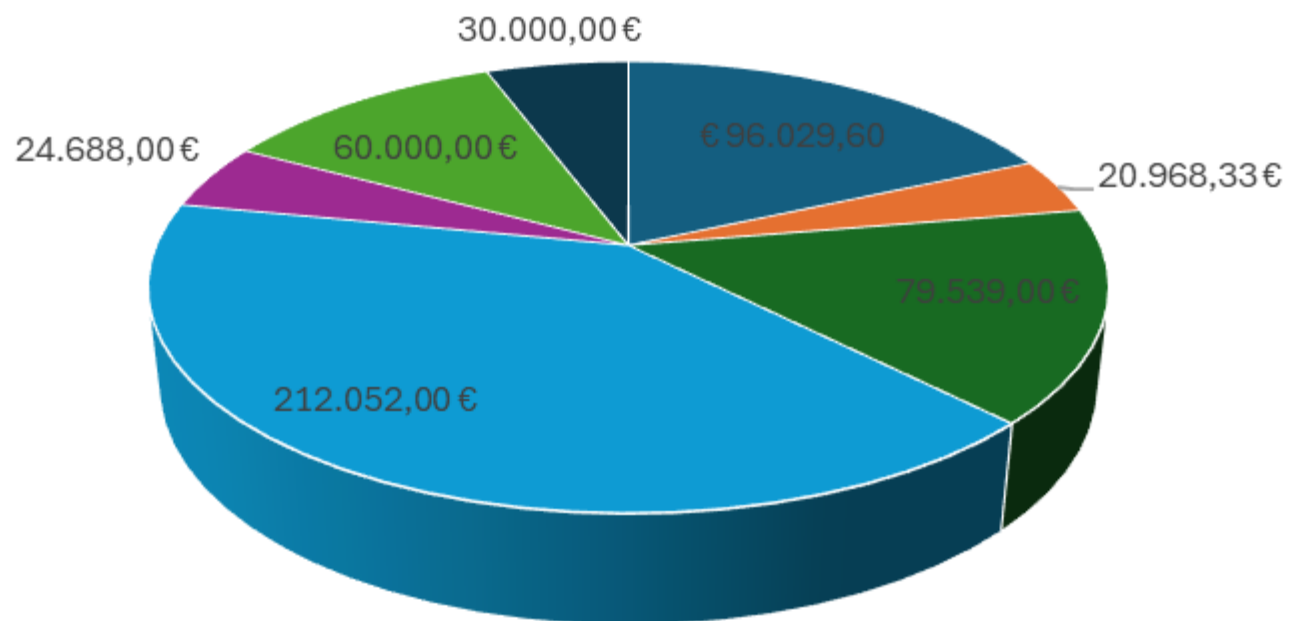
Gedeeltelijk weghalen dijk tussen vijvers

Waterhuishouding regelen / stuwen herstellen



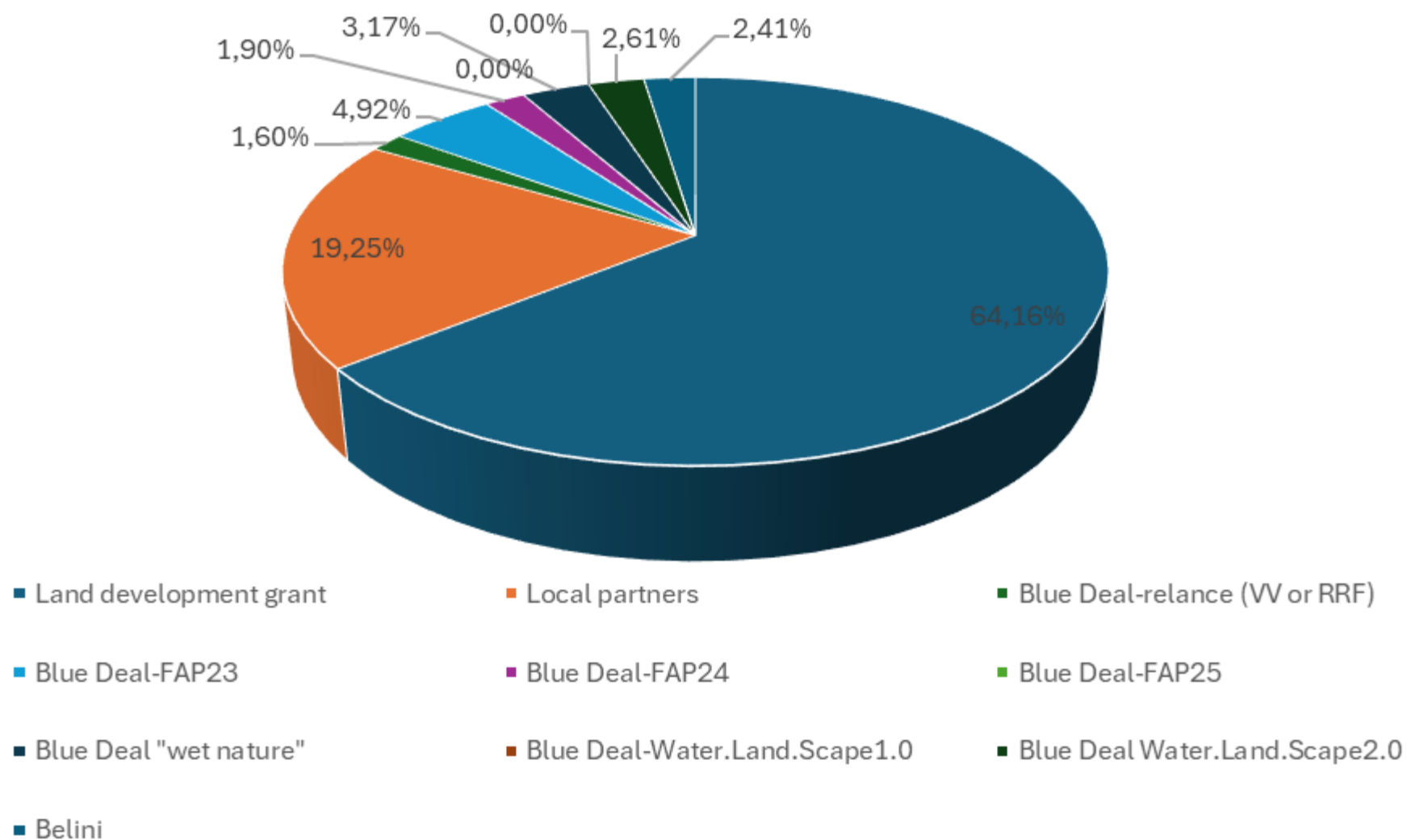


Spread of Belini funding

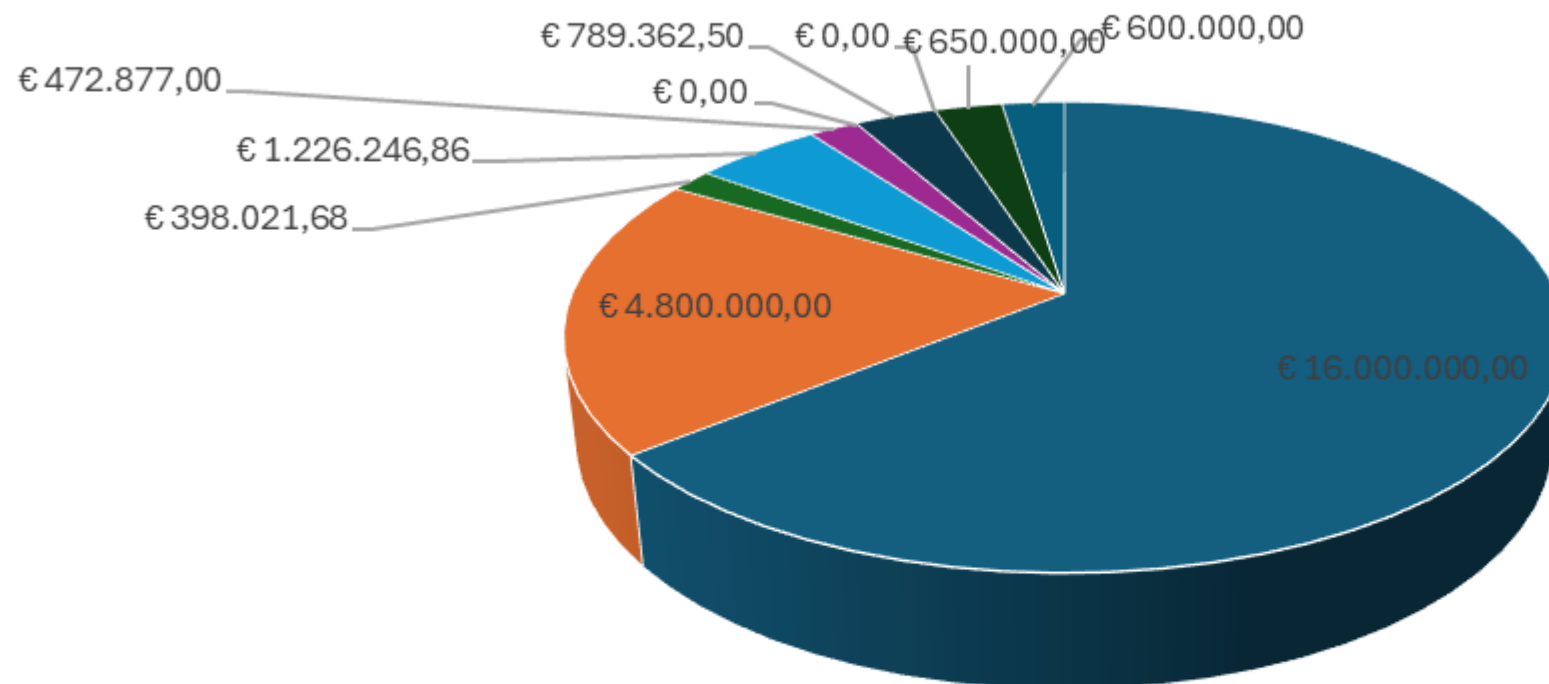


- LIP MOL-SGR UDGeewaert
- LIP OMG UD2
- LIP OMG UD1
- LIP MOL-BRS Alsebergse Beemd
- LIP MOL-BRS Monding Zevenborrebeek
- LIP Ijse UD1
- LIP OVID Kamstraat hermeandering Ijse

Pooling of financial resources (landscaping works) during the period 2014–2025

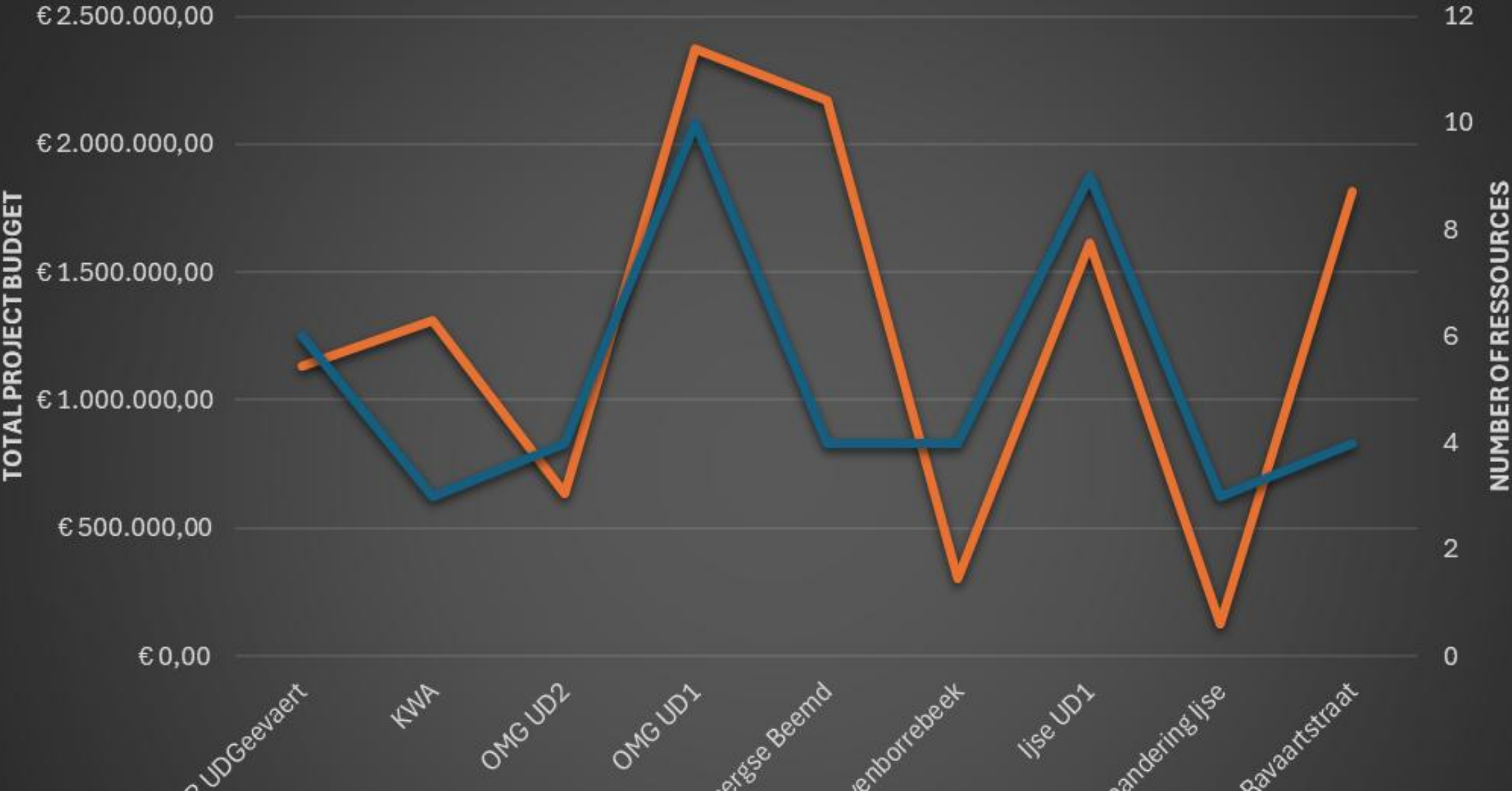


Pooling of financial resources (landscaping works) during the period 2014-2025

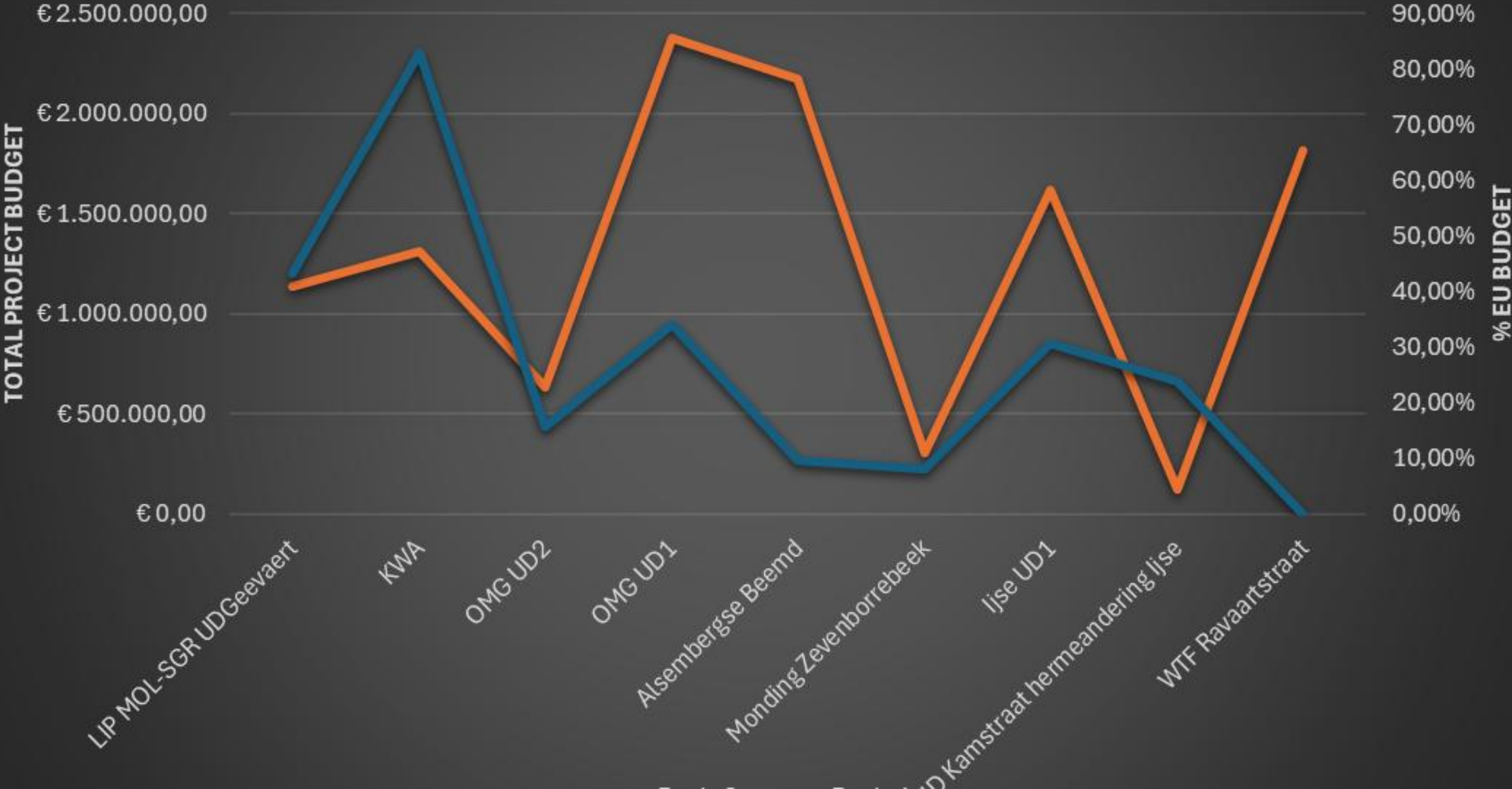


- Land development grant
- Local partners
- Blue Deal-reliance (VV or RRF)
- Blue Deal-FAP23
- Blue Deal-FAP24
- Blue Deal-FAP25
- Blue Deal "wet nature"
- Blue Deal-Water.Land.Scape1.0
- Blue Deal Water.Land.Scape2.0
- Belini

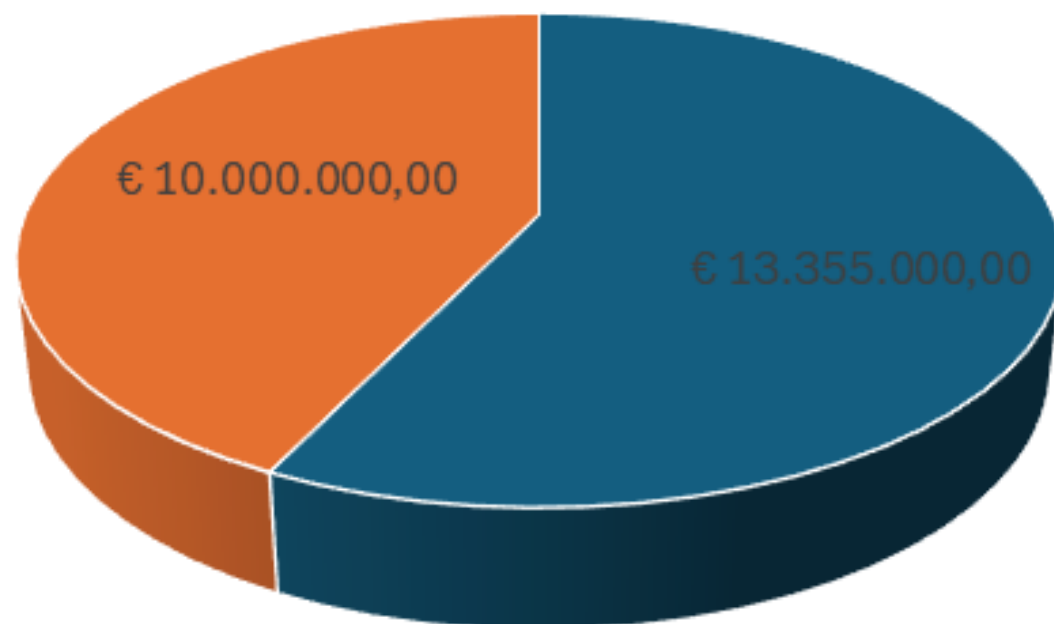
Ressource pooling / project



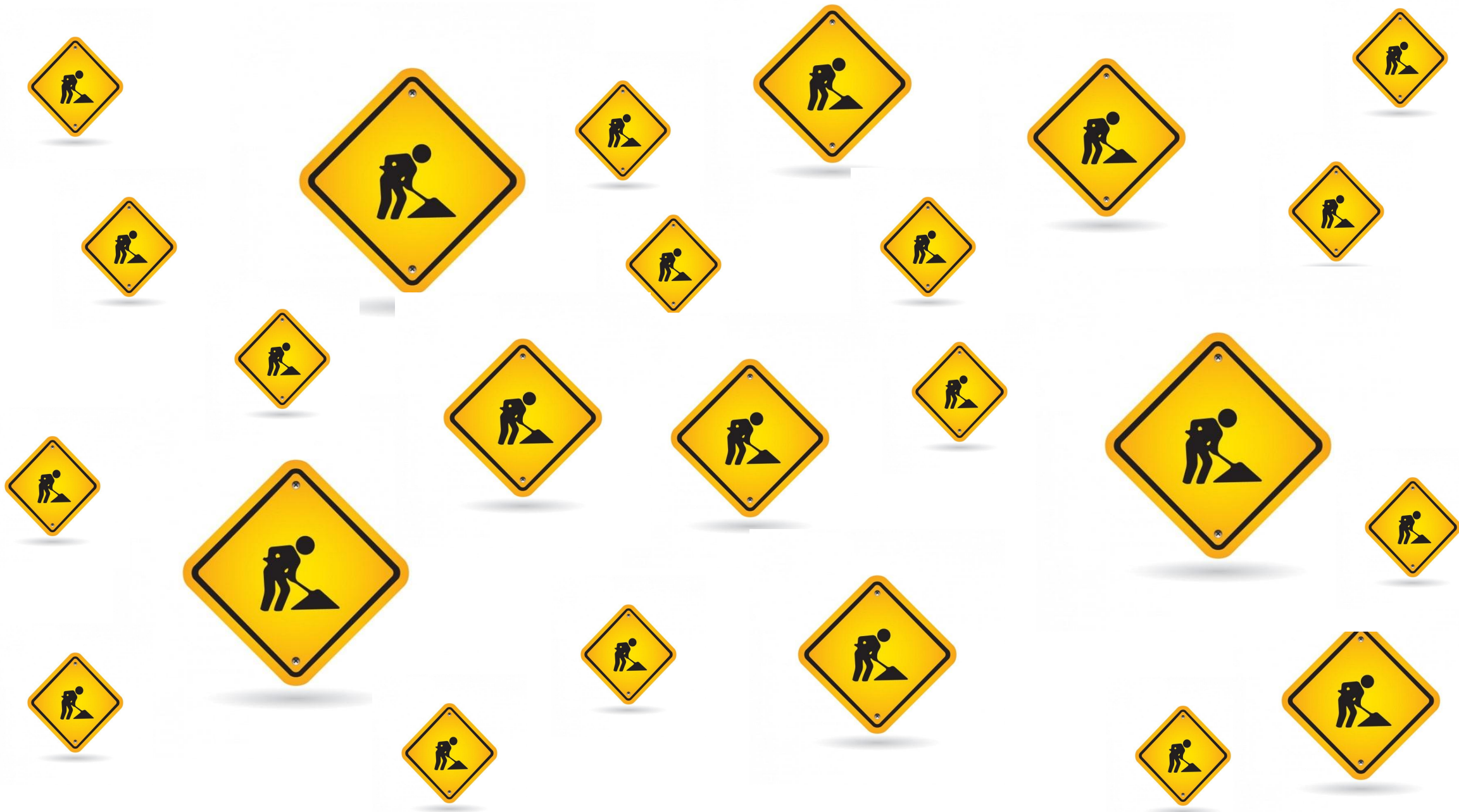
Ressource pooling / project



Pooling of financial resources (land acquisitions) during the period 2014–2025



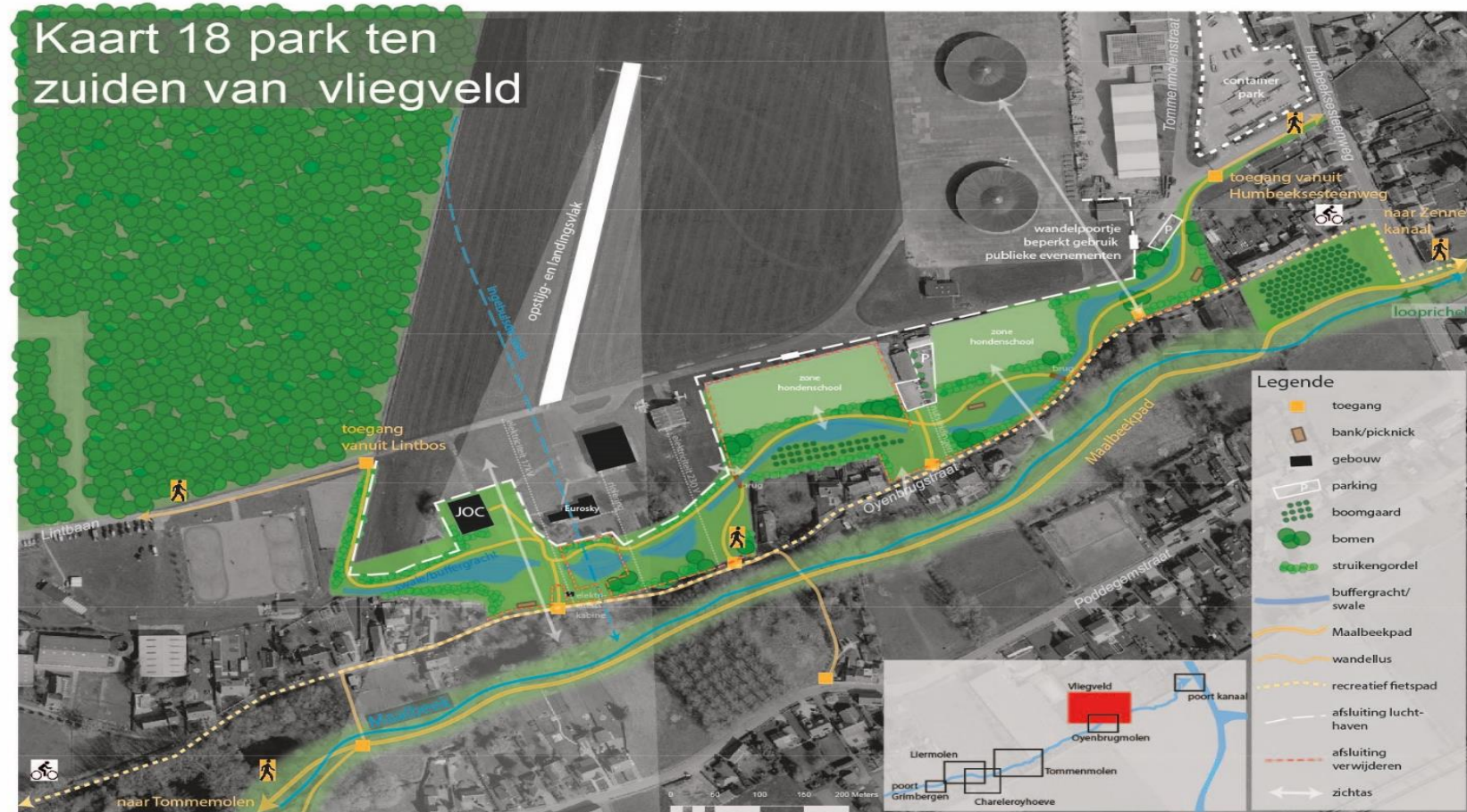
■ Vlaams ■ EU relance



Geevaertvijver



Maalbeekvallei - Grimbergen



Dossier: Swale en park ten zuiden vliegveld (BD en Belini)

Ravaartstraat



Reading the graphs (1)

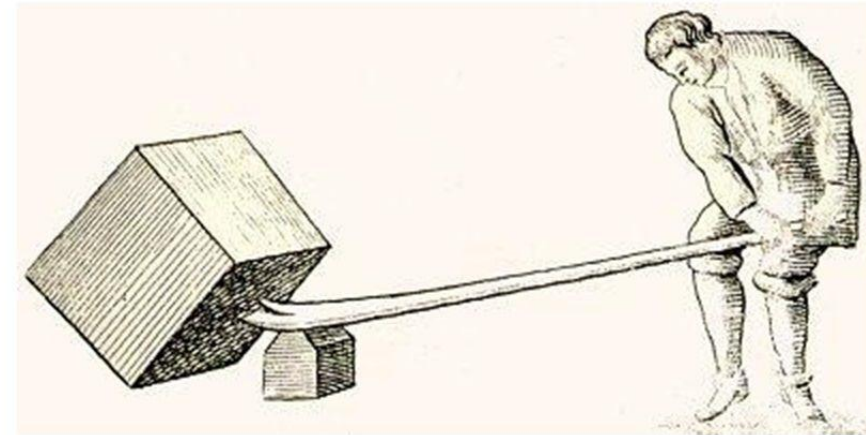
- **Overall spreading** (also financial) is implicitly embedded in the structure of Belini: multiple actions, partners, themes, and locations make distribution an integral part of the design.
- Belini demonstrates in practice , that it is both practical and almost self-evident to spread funding across different actions, locations, and partners—especially in large, integrated projects.
 - Spreading means **risks** are less concentrated, different **needs** are addressed, and multiple **stakeholders** are served.
 - It fosters **synergy** between projects or partners.
 - It aligns perfectly with large-scale funding programs such as LIFE Integrated Projects, which are designed for integrated, broad approaches.
- The approach of land development aligns especially well with Life IP.



Reading the graphs (2)

- The majority of the funding in Flemish Land Agency cases comes from **Flemish resources**.
- The EU creates a **leverage effect** by delivering extra finances.
- It also strengthens the overall project structure through **complementarity**:
 - different EU **instruments** (Belini, Bleu Deal, etc) support
 - various **phases** and **objectives** of the project (e.g., recovery, nature restoration, water quality) ensuring
 - **continuity** in time and thematic **diversity**.
- In practice, these EU funds act also as a **buffer** against inflation (+/- 40-50 % since 2014) and help maintain the real value and impact of the initial Flemish investment over the long implementation period (2014–2025)."

Afbeelding 1.



Last

Draaipunt

Inspanning

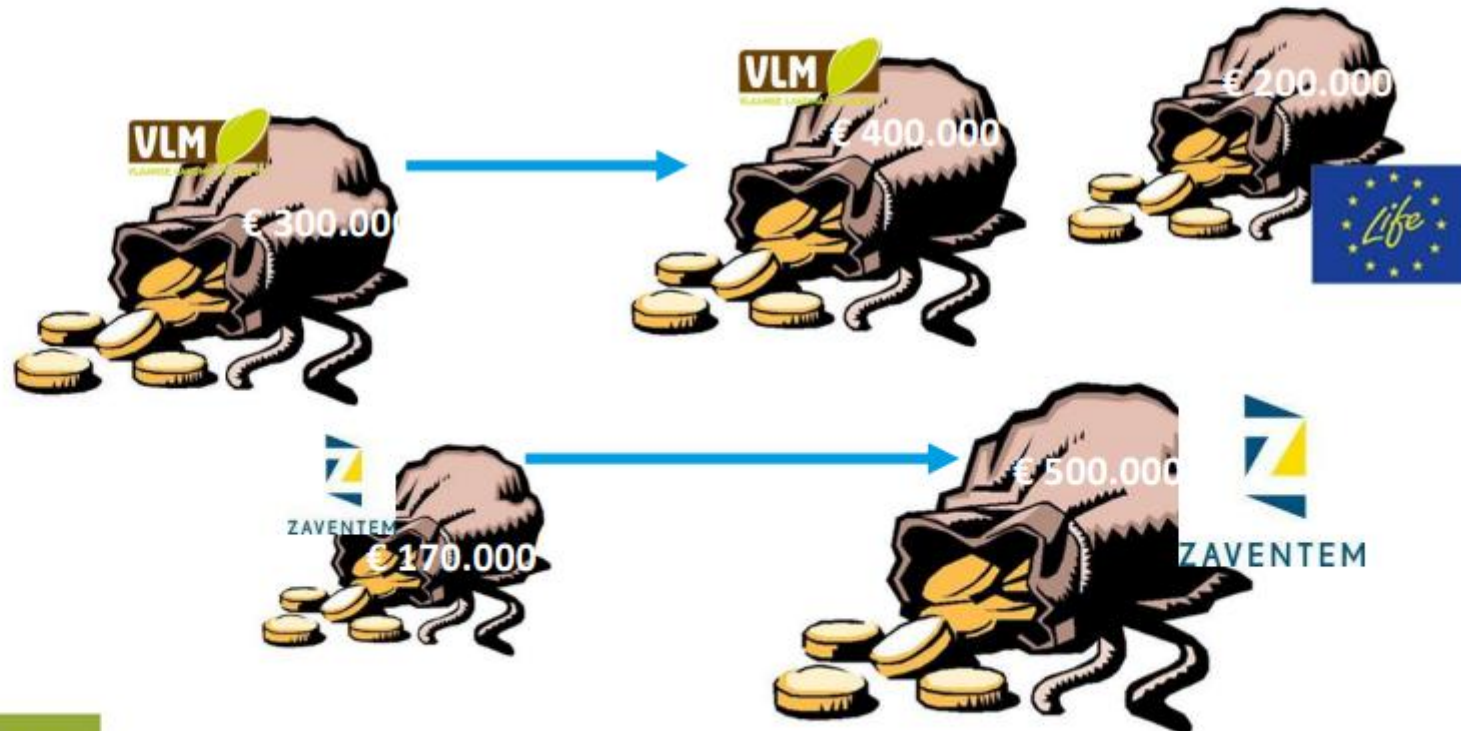
(groep 1)

Additional funding: European project - Life Green4Grey

<https://green4grey.be/en>

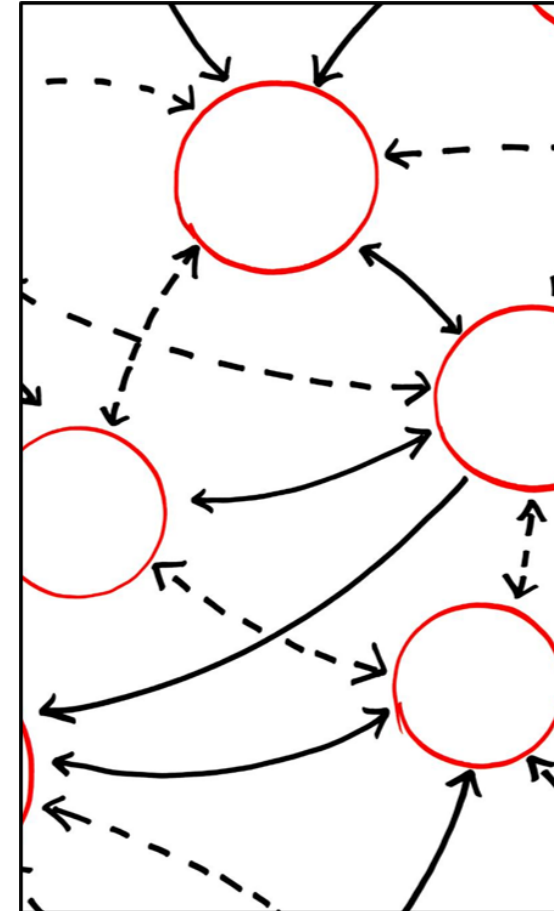
Original budget

Additional LIFE funding



Reading the graphs (3)

- **The Dynamics of Growing Ambition : "From Project Experience to Strategic Vision"**
- As the administration grows stronger in project-based work, the **scope** of its ambitions expands as well. Each successful project builds confidence to go further — the **ambition loop** that drives maturity.
- European programs such as **Life IP** provide the essential **external stimulus**: they demand sharper goals, foster innovation, and open perspectives for cross-border collaboration. In this way, the administration develops a more mature and forward-looking project culture, where local initiatives evolve into European benchmarks.



successful introduction of innovative finance arrangements for implementing naturebased-solutions (NBS)?

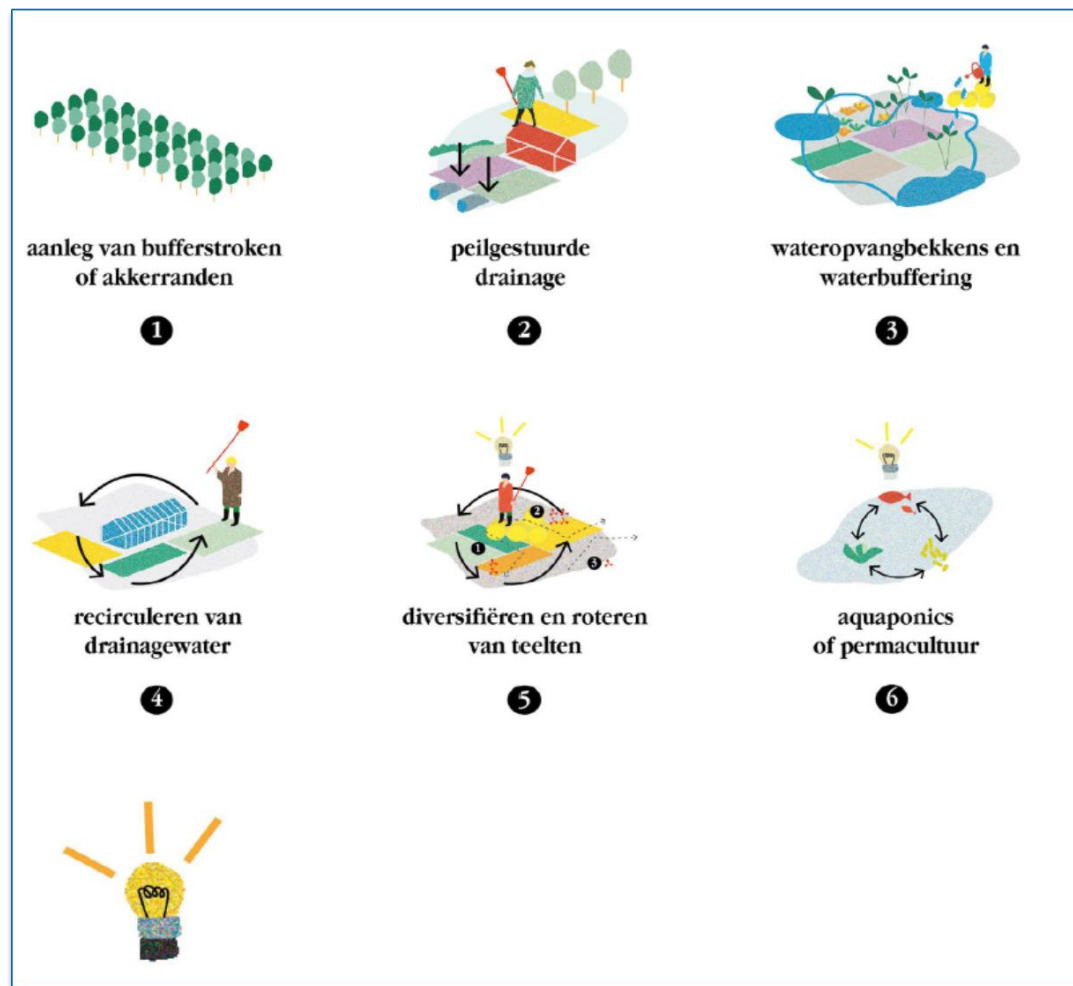
- Value capturing by means of retributions or taxes based on public value capture
- Corporate Social & Environmental Responsibility
- Blockchain for transparency against green washing
- Payment for Ecosystem Services
- Banking and insurance
- Cofinancing by beneficiaries and impact-based crowdlending
- ...

Local partners and program partners work together



water + land + schap

the first measures in the field





Co-funded by
the European Union

- Money

BUT ALSO

- Knowledge sharing
- Innovation
- Networking with partners in other EU regions
- Stronger cooperation with partners within own region
- Inspiring future policies
- ...

European Commission

The future is green. The future is *Life*

Discover the EU's LIFE Programme:
taking actions for the environment,
for climate change, for clean energy
— and for you.
#LIFEprogramme

4 SUB-PROGRAMMES:

- NATURE & BIODIVERSITY
- CIRCULAR ECONOMY & QUALITY OF LIFE
- CLIMATE CHANGE MITIGATION & ADAPTATION
- CLEAN ENERGY TRANSITION

6000+
LIFE projects
since 1992

1000+
projects
in action

€5.4
billion
in funding for
2021 - 2027

€600
million
in funding for
2025

European Climate, Infrastructure and Environment Executive Agency

Food for discussion

- Extra complementary funding is needed to scale up the number of results in the field: funding not only for investments, also for enough expert staff capacity
- Establishing and supporting local coalitions is another good way to scale up: more projects, more measures, more partners, more money
- ...