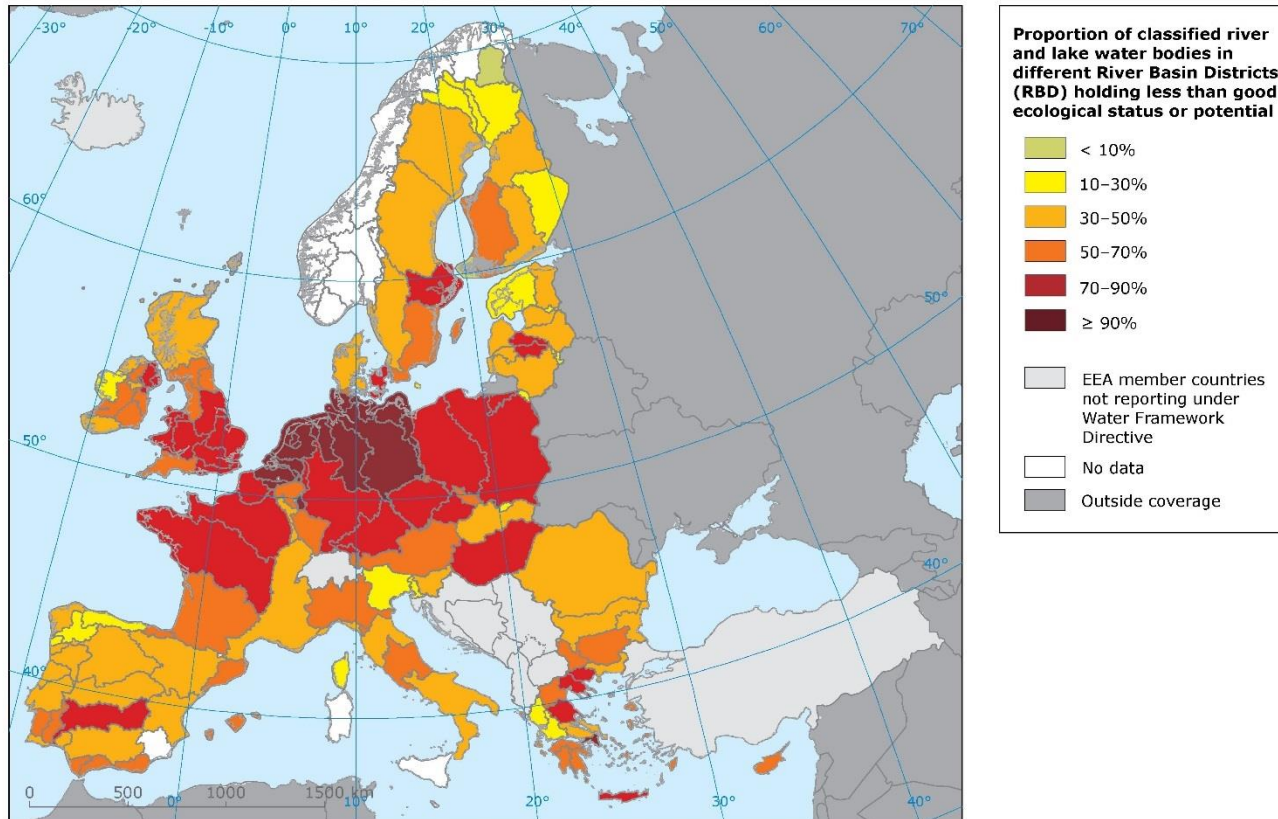


*belini*



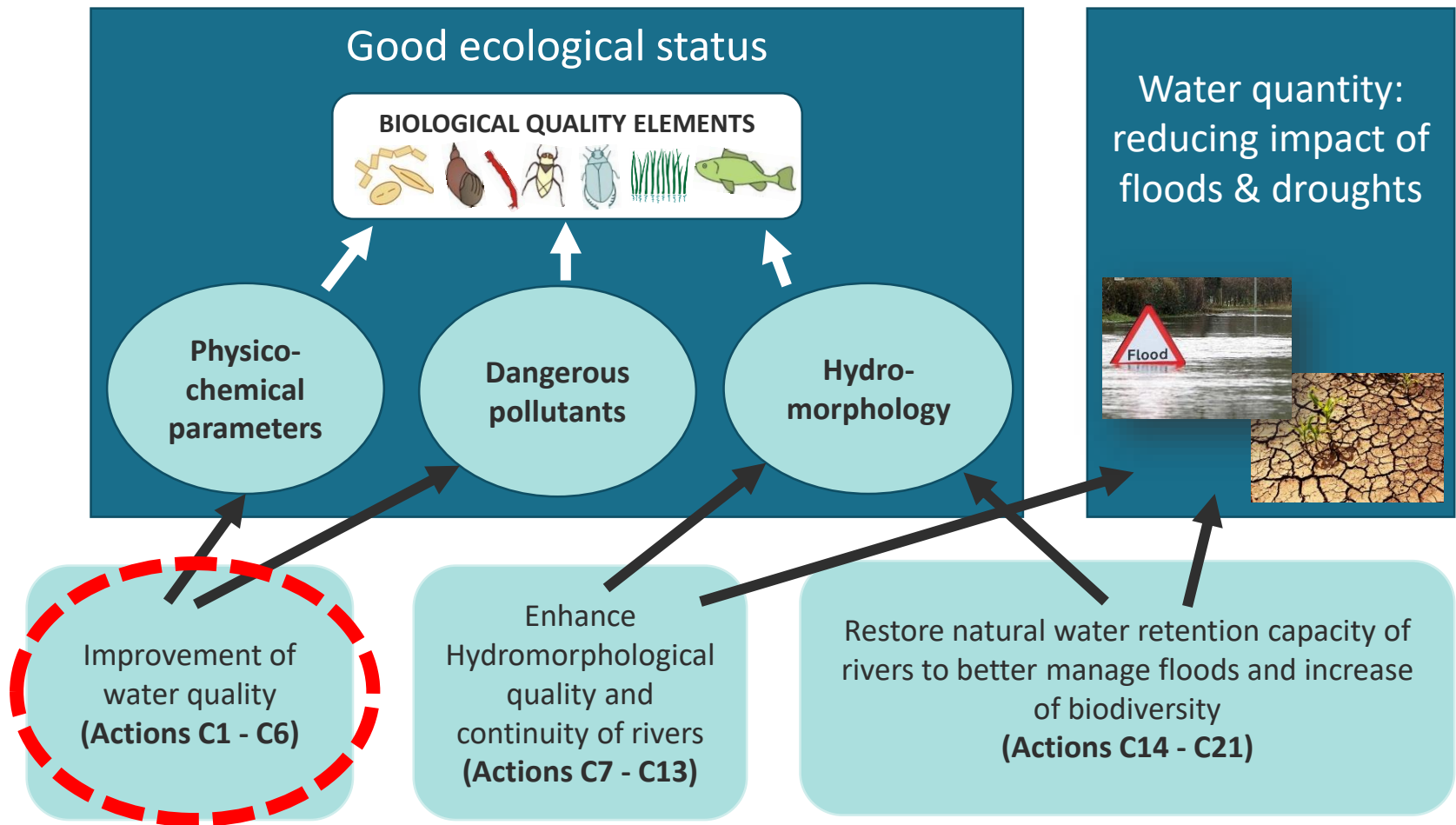
# Work package on Water Quality

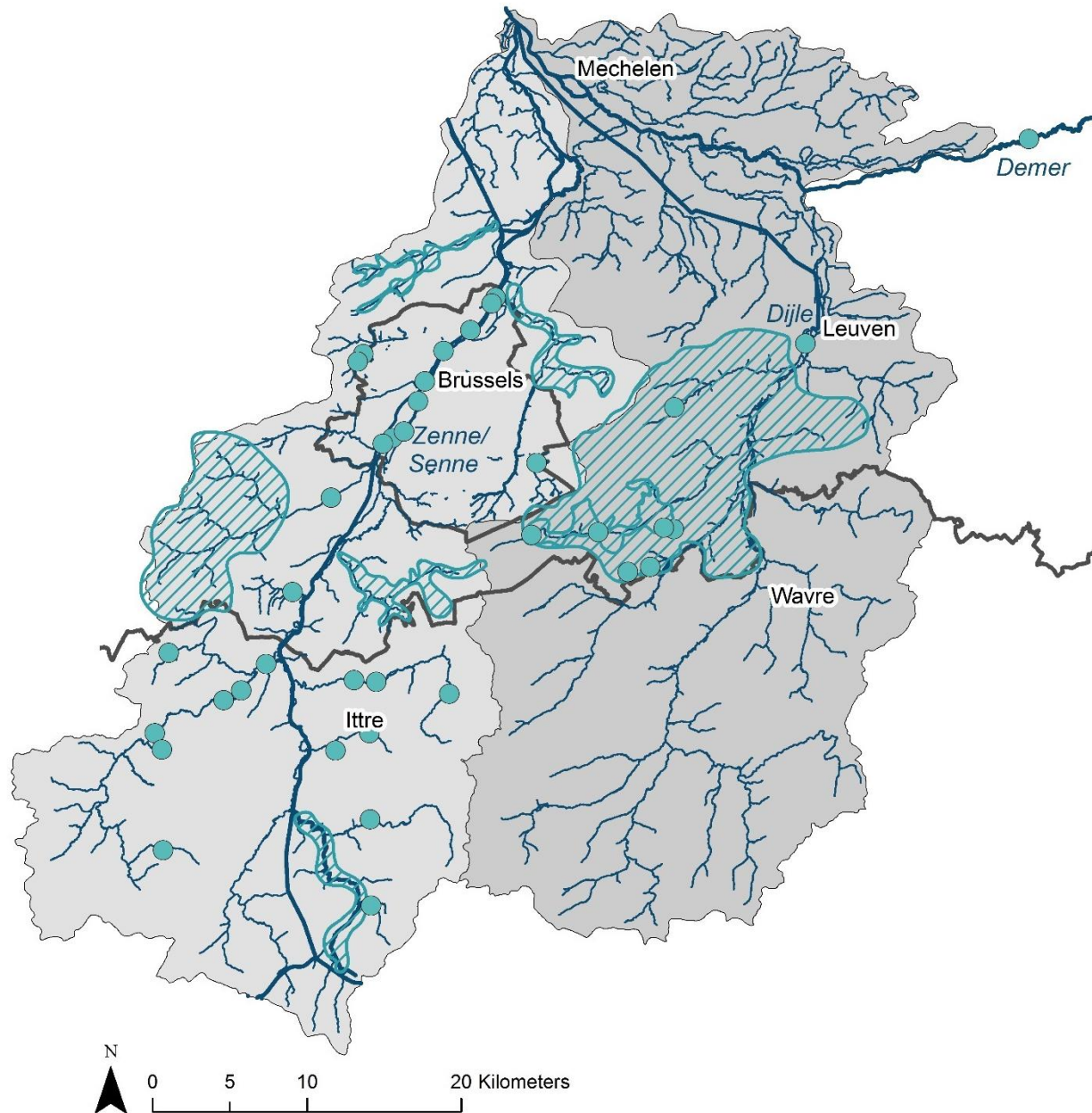
# Context



Source: European Environment Agency, 2012. Proportion of classified river and lake water bodies in different River Basin Districts holding less than good ecological status or potential for rivers and lakes.

# Life Belini: realization of implementation projects





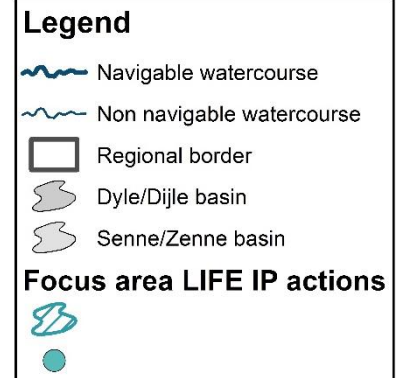
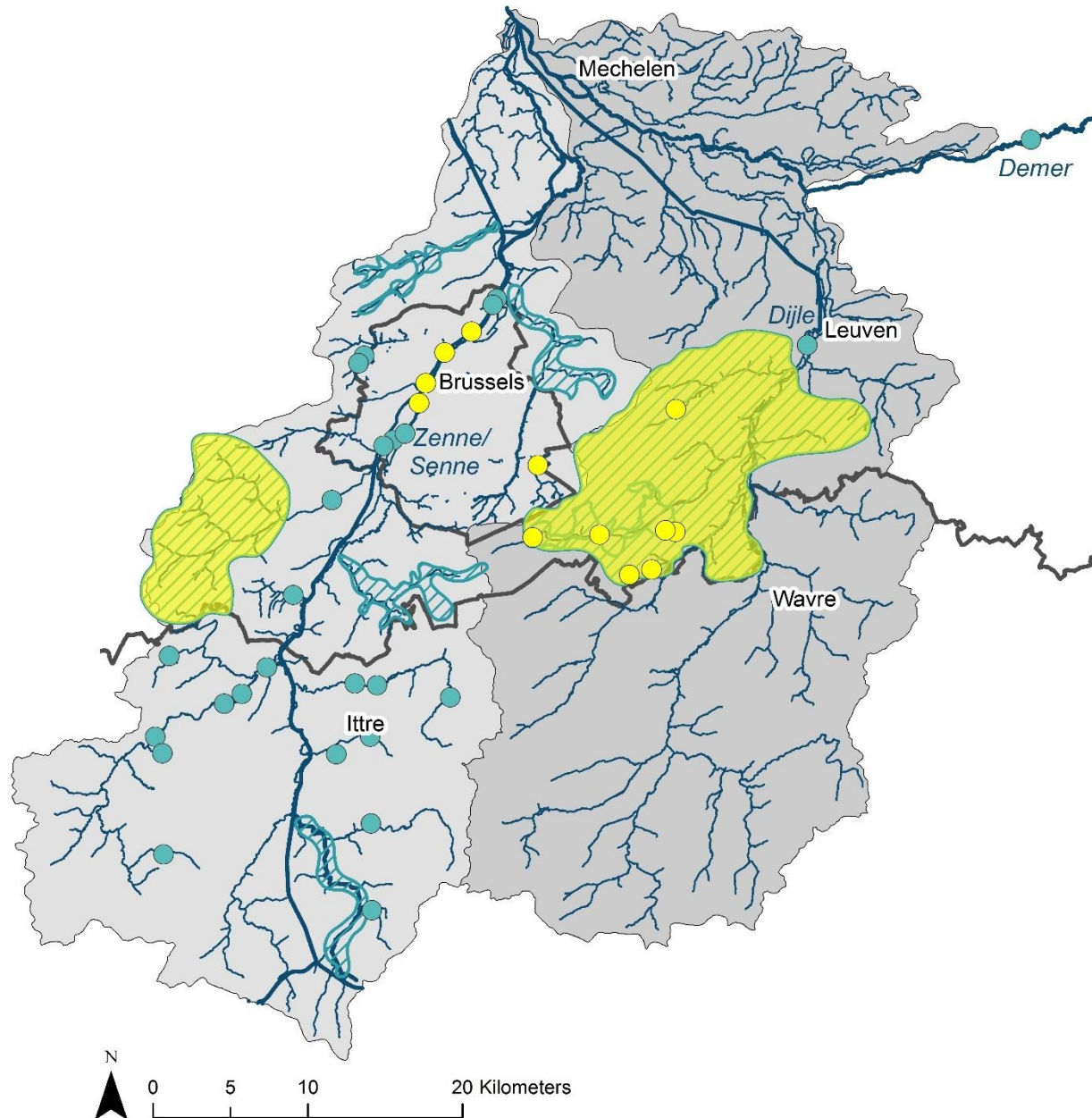
**Legend**

- Navigable watercourse
- Non navigable watercourse
- Regional border
- Dyle/Dijle basin
- Senne/Zenne basin

**Focus area LIFE IP actions**

- Focus area LIFE IP actions
- Focus area LIFE IP actions



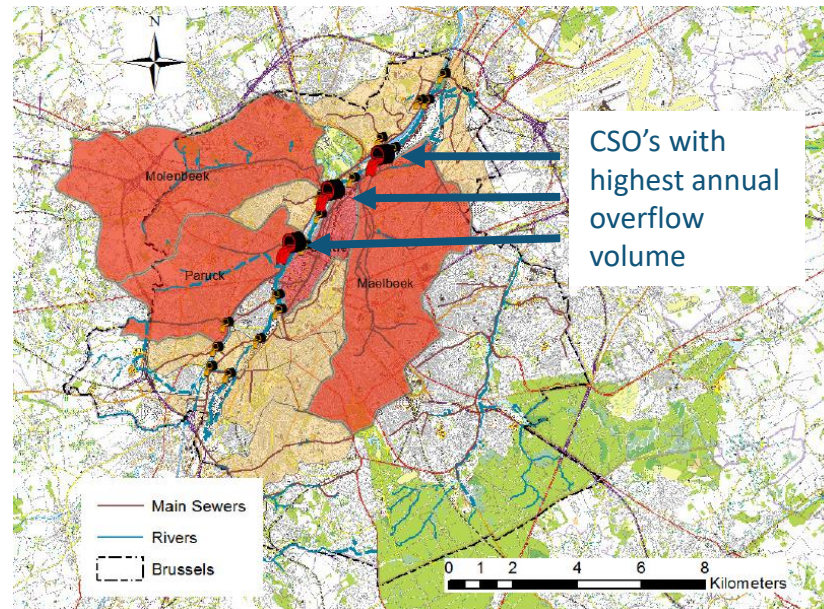
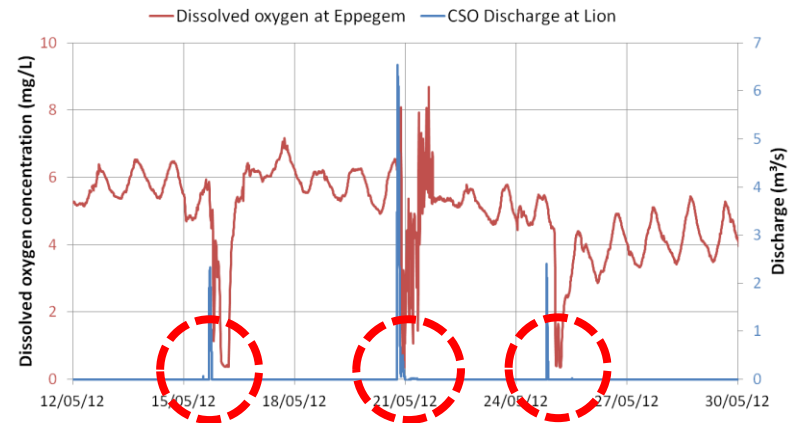
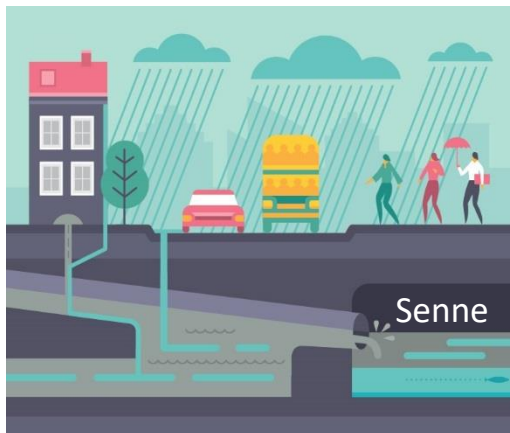
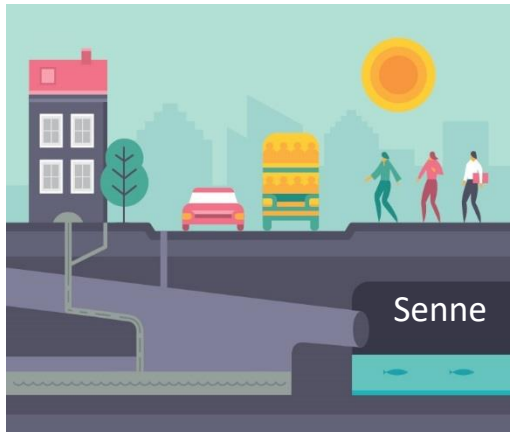


**WATER QUALITY**

# C1 MITIGATING THE IMPACT OF THE 3 MAJOR COMBINED SEWER OVERFLOWS OF BRUSSELS

*belini*

- 1) Effect on river
- 2) Identify realistic solutions
- 3) Implementation & evaluation



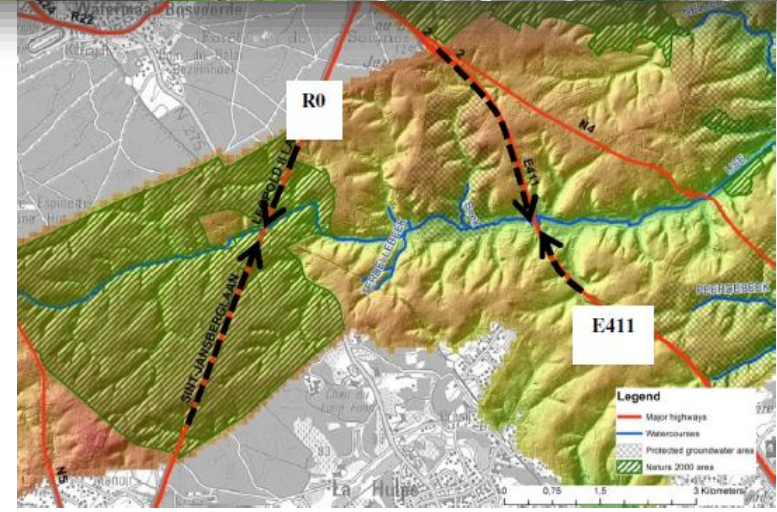
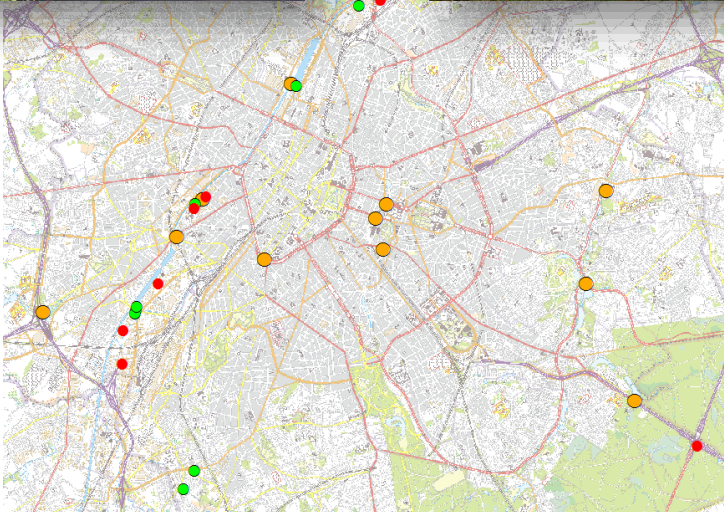


# C2 CONTROLLING POLLUTED RUNOFF HIGHWAYS



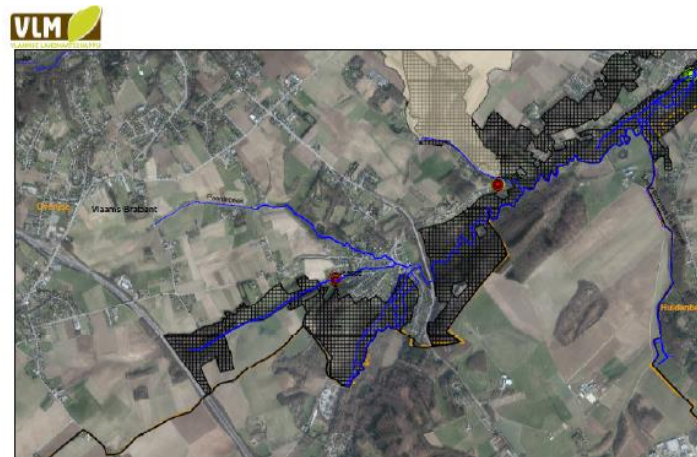
Characterization of highway runoff  
and its effects on the watercourses,  
Identification of best management  
practices

Implementation: pilot project IJse  
river - R0 and E411





# C3 TACKLING NITRATE POLLUTION ORIGINATING FROM AGRICULTURE

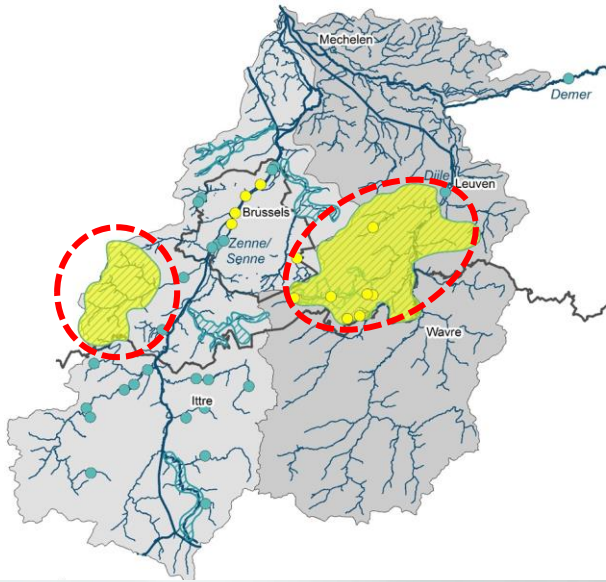


- 1) Farm visits: increased control on agricultural malpractice, evaluation and optimization fertilizers/manure use, respecting distance to watercourse, set up an individual fertilization strategy,...
- 2) Focus on plateau IJse & Laan (location with persistent poor water quality)
- 3) Evaluation of soil and water quality



# C4 ANTI-EROSION CONTROL MEASURES AT STRATEGIC LOCATIONS

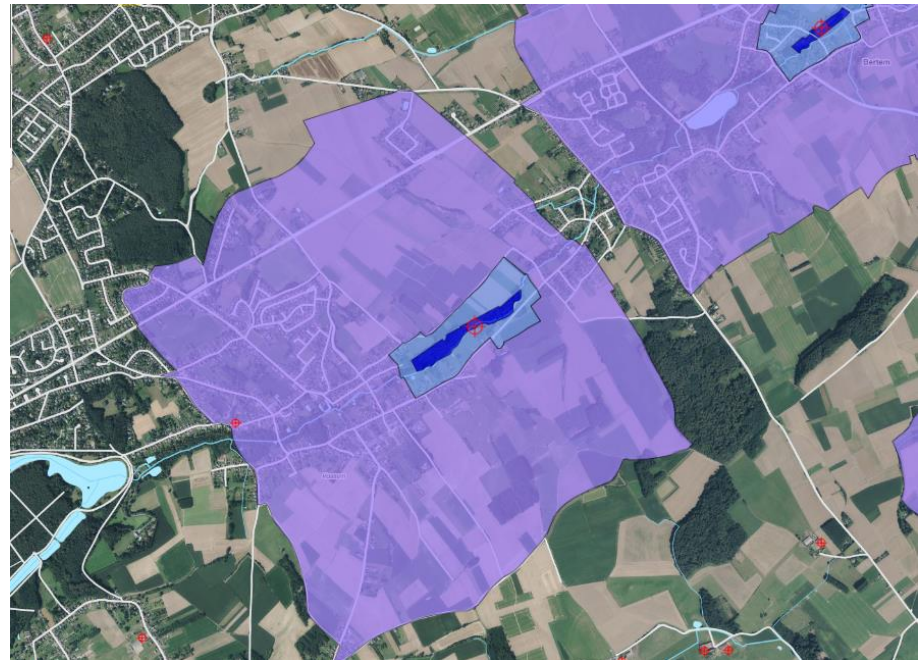
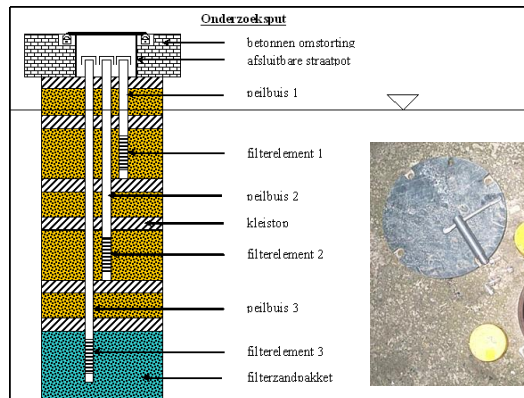
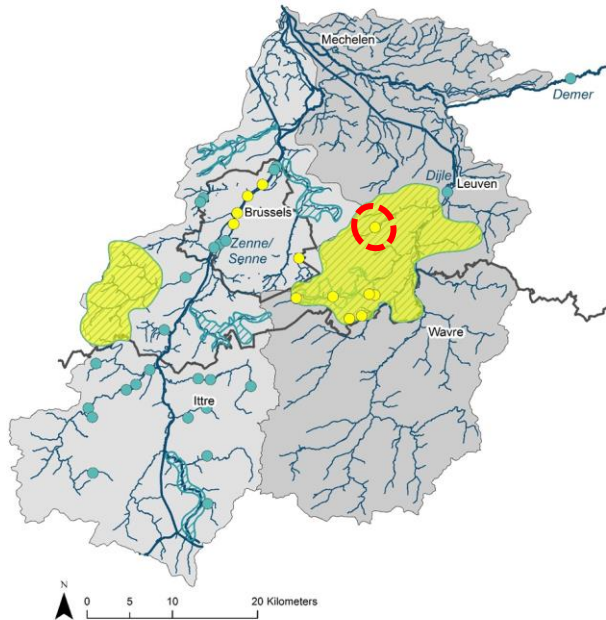
*belini*





# C5 ASSESSMENT OF THE ORIGIN OF NITRATE AND NITRATE TRENDS NEAR THE DRINKING WATER ABSTRACTION SITE OF LEEFDAAL PUTTEBOS

*belini*



# C6 INTEGRAL ANALYSIS OF THE WATERBODIES WITH AN AQUATIC ECOLOGICAL MODEL

*belini*

